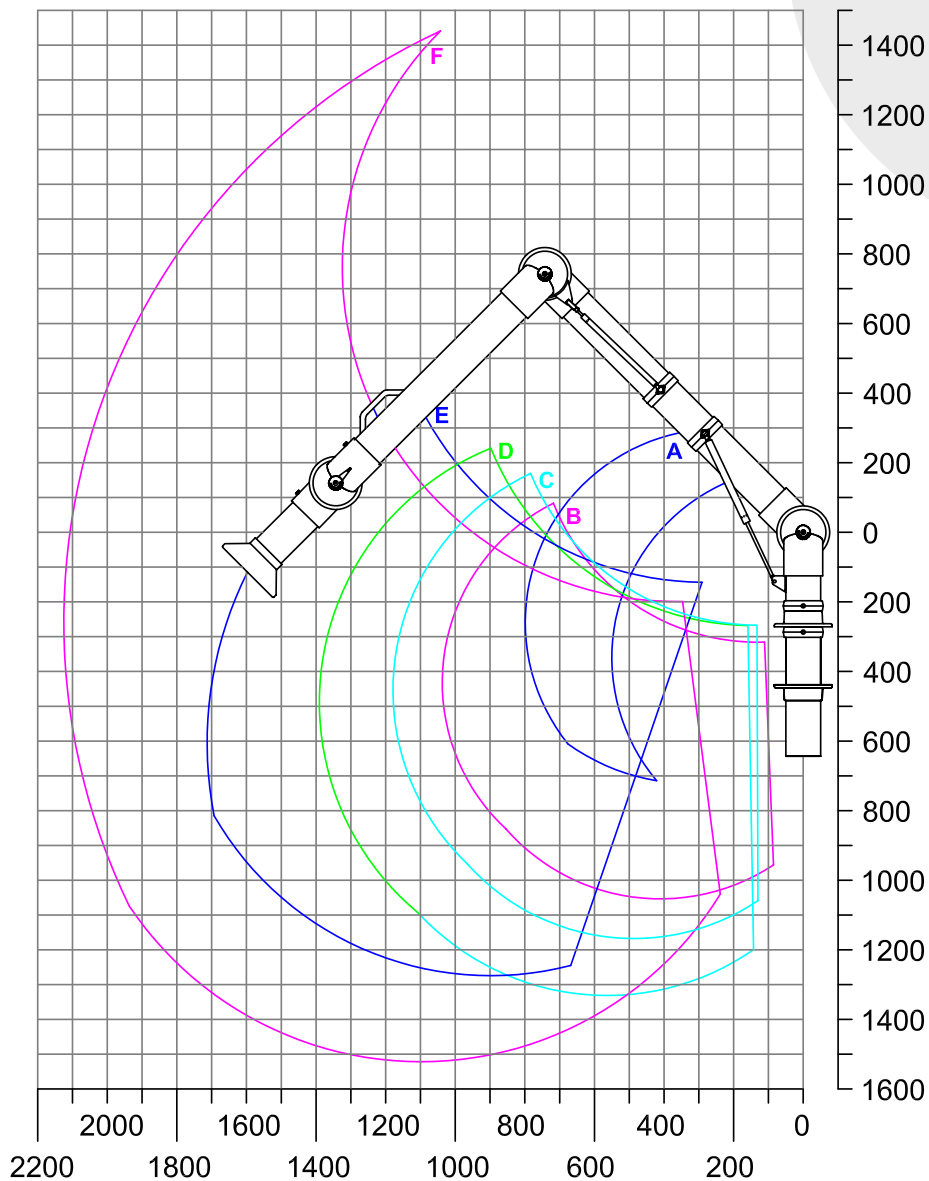


System 100 – Aluminium (AL)

Table Mounted (TM)



| | |
|------------------------|------------|
| A: Model 100-55-1-5 | R: 795 mm |
| B: Model 100-4540-1-5 | R: 1040 mm |
| C: Model 100-5545-1-5 | R: 1185 mm |
| D: Model 100-6555-1-5 | R: 1370 mm |
| E: Model 100-9065-1-5 | R: 1710 mm |
| F: Model 100-10585-1-5 | R: 2130 mm |

Accessory: Hood Ø 200 mm No. 1-10024-5

The working area of the arm is defined from the center of the opening of the accessory.

The working area changes according to type of accessory and positioning.

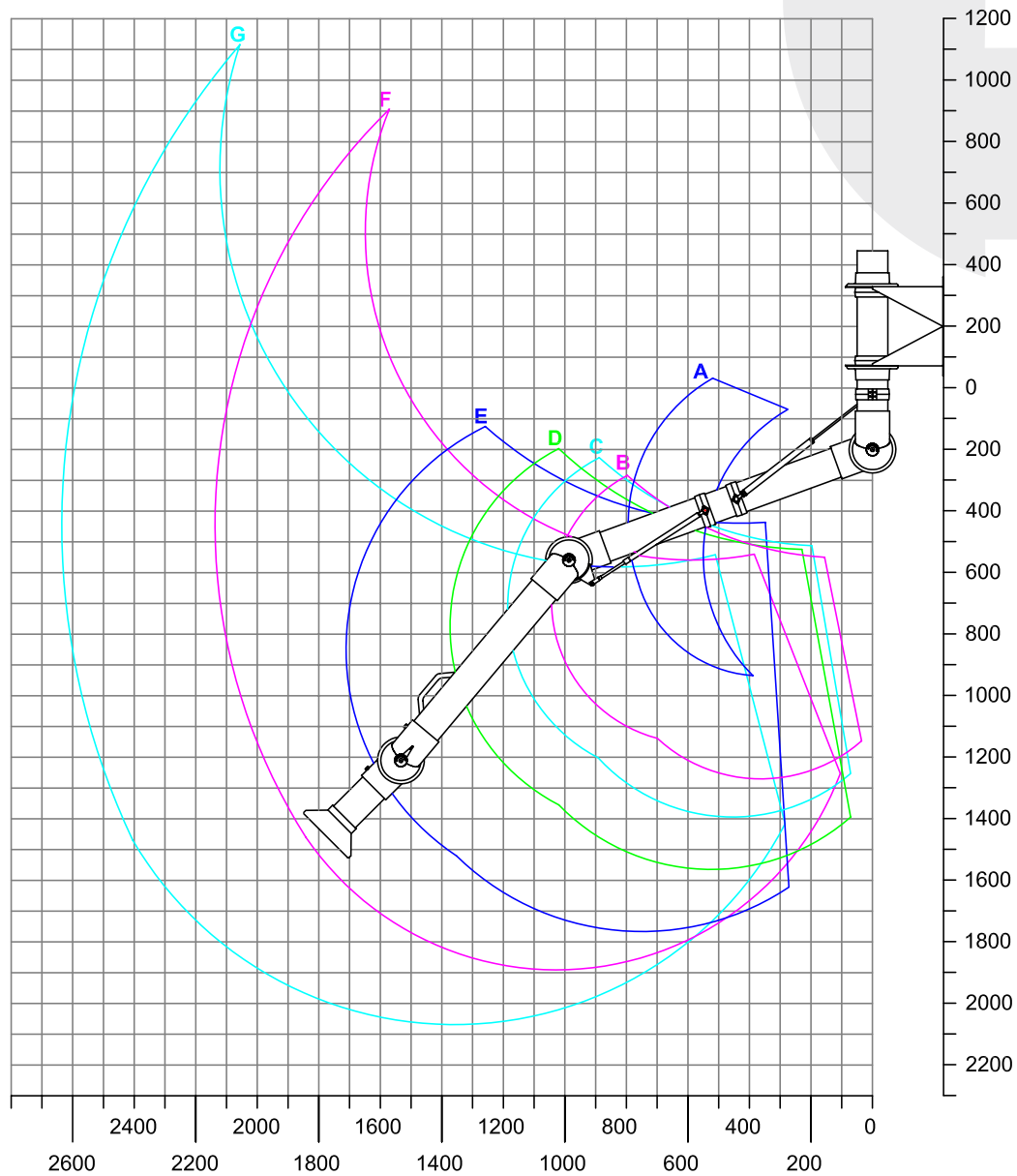
When choosing the arm we recommend that the stationary working position of the accessory is not placed in the highest or lowest part of the working area.

(All measurements in mm)



System 100 – Aluminium (AL)

Wall Mounted (WM)



| | |
|-------------------------|------------|
| A: Model 100-55-2-5 | R: 795 mm |
| B: Model 100-4540-2-5 | R: 1040 mm |
| C: Model 100-5545-2-5 | R: 1185 mm |
| D: Model 100-6555-2-5 | R: 1370 mm |
| E: Model 100-9065-2-5 | R: 1710 mm |
| F: Model 100-10585-2-5 | R: 2130 mm |
| G: Model 100-135105-2-5 | R: 2630 mm |

Accessory: Hood Ø200 mm No. 1-10024-5

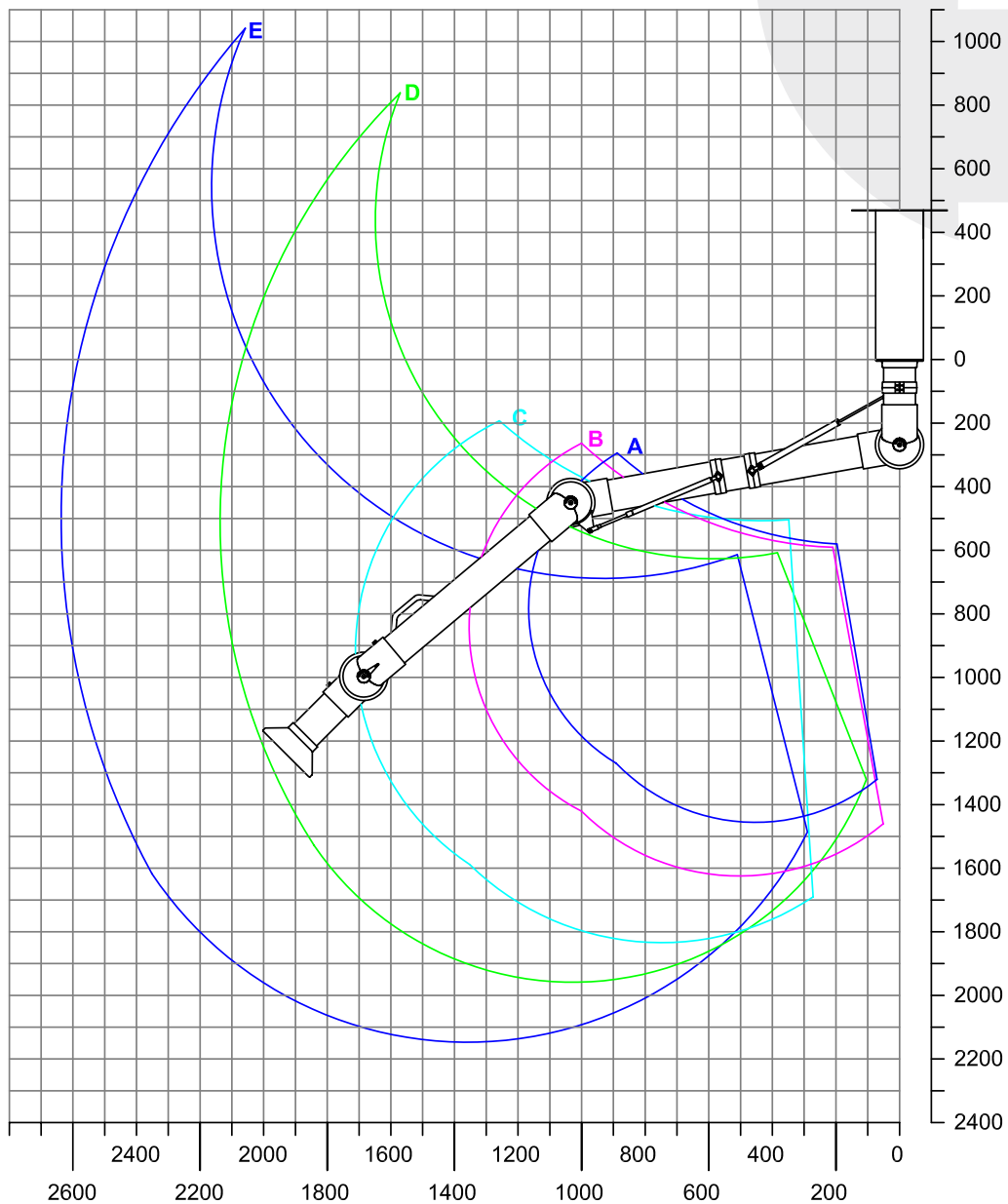
*The working area of the arm is defined from the center of the opening of the accessory.
The working area changes according to type of accessory and positioning.*

When choosing the arm we recommend that the stationary working position of the accessory is not placed in the highest or lowest part of the working area.

(All measurements in mm)

System 100 – Aluminium (AL)

Ceiling Mounted (CM)



| | |
|-------------------------|------------|
| A: Model 100-5545-3-5 | R: 1185 mm |
| B: Model 100-6555-3-5 | R: 1370 mm |
| C: Model 100-9065-3-5 | R: 1710 mm |
| D: Model 100-10585-3-5 | R: 2130 mm |
| E: Model 100-135105-3-5 | R: 2630 mm |

Accessory: Hood Ø200 mm No. 1-10024-5

The working area of the arm is defined from the center of the opening of the accessory.

The working area changes according to type of accessory and positioning.

When choosing the arm we recommend that the stationary working position of the accessory is not placed in the highest or lowest part of the working area.

(All measurements in mm)