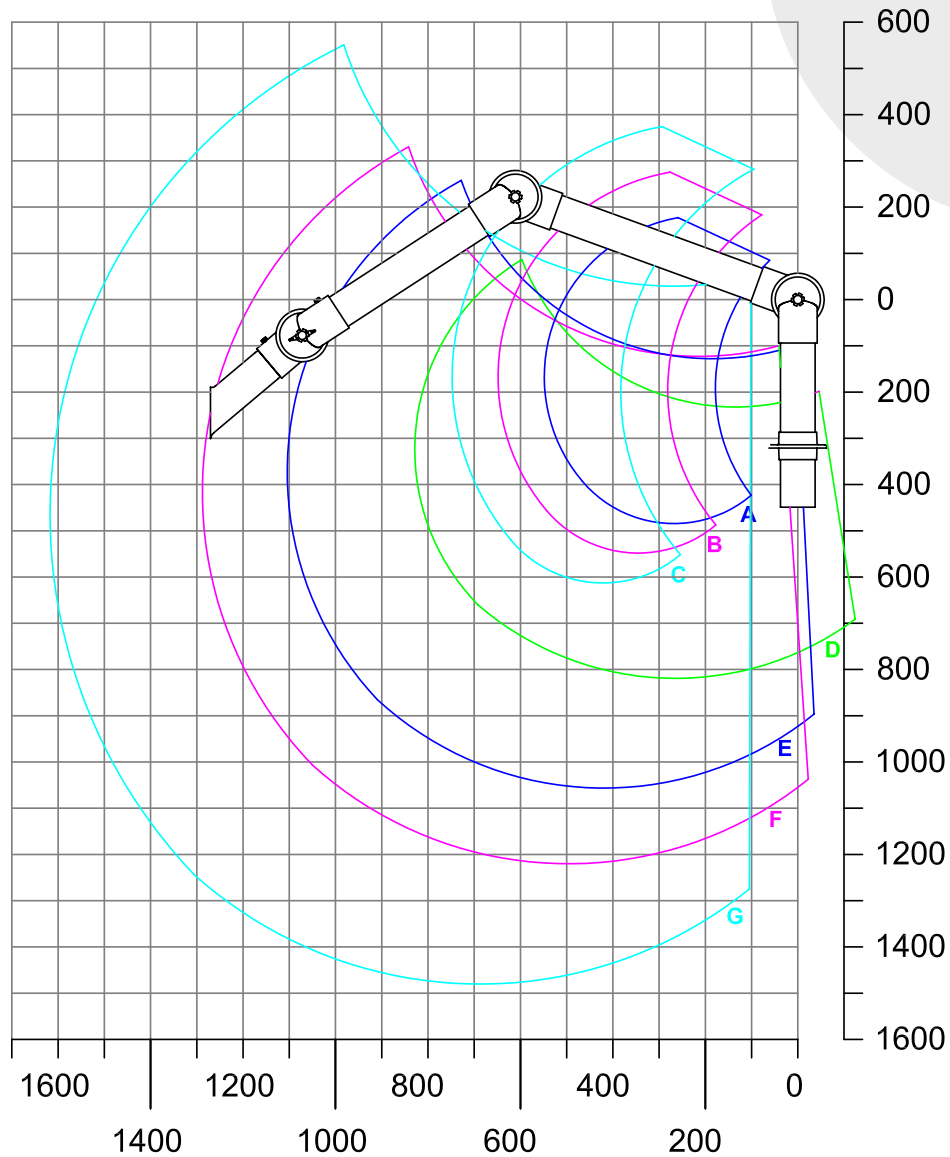


System 75 – Aluminium (AL)

Table Mounted (TM)



A: Model 75-35-1-4 /-5	R: 550 mm
B: Model 75-45-1-4 /-5	R: 650 mm
C: Model 75-55-1-4 /-5	R: 750 mm
D: Model 75-3535-1-4 /-5	R: 830mm
E: Model 75-5545-1-4 /-5	R: 1105 mm
F: Model 75-6555-1-4 /-5	R: 1290mm
G: Model 75-9065-1-4 /-5	R: 1620 mm

Accessory: Extractor Tube No. 1-7525

The working area of the arm is defined from the center of the opening of the accessory.

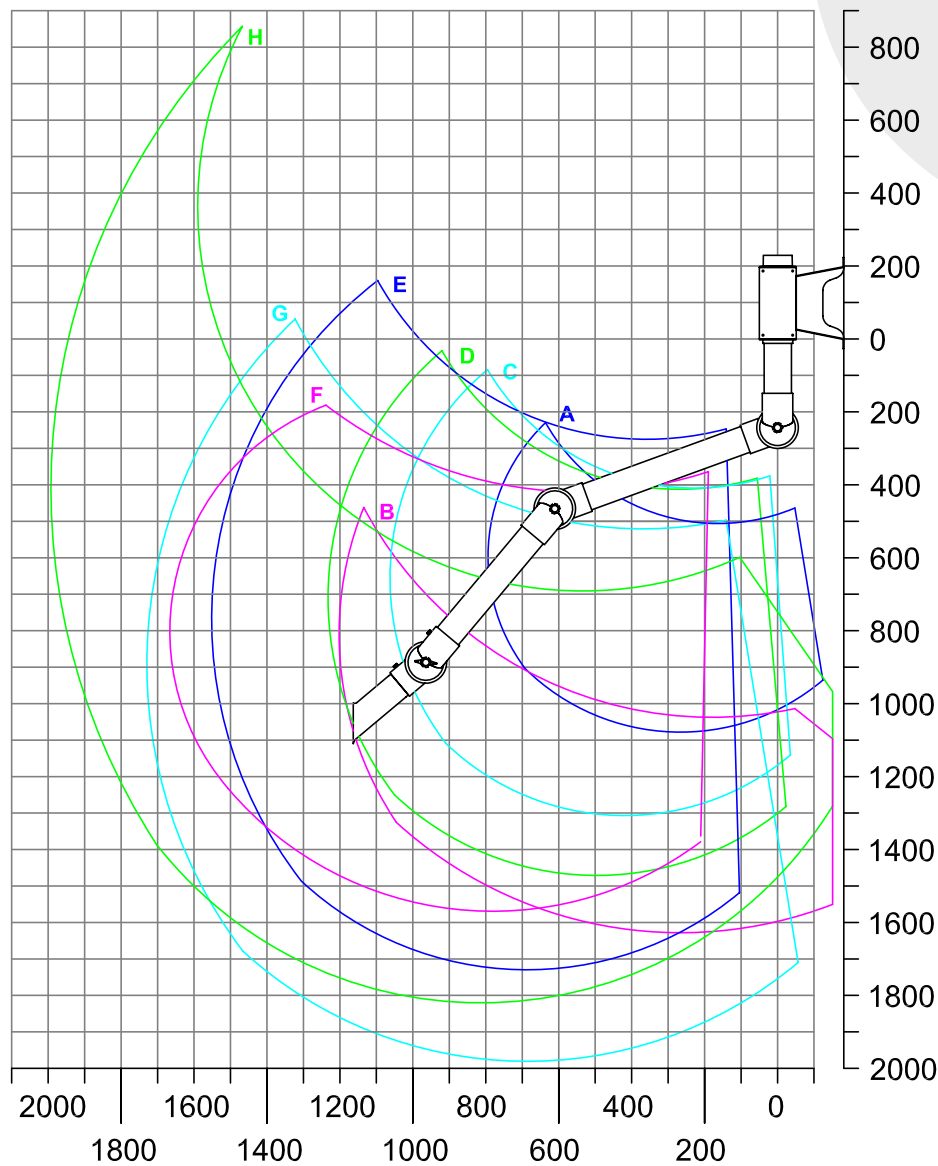
The working area changes according to type of accessory and positioning.

When choosing the arm we recommend that the stationary working position of the accessory is not placed in the highest or lowest part of the working area.

(All measurements in mm)

System 75 – Aluminium (AL)

Wall Mounted (WM)



A: Model 75-3535-3-4 /-5	R: 745 mm
B: Model 75-3590-3-4 /-5	R: 1200 mm
C: Model 75-5545-3-4 /-5	R: 1060 mm
D: Model 75-6555-3-4 /-5	R: 1230mm
E: Model 75-9065-3-4 /-5	R: 1550 mm
F: Model 75-9065-3-22-4 /-5	R: 1660 mm
G: Model 75-9090-3-4 /-5	R: 1730 mm
H: Model 75-9090-3-22-4 /-5	R: 1990 mm

Accessory: Extractor Tube No. 1-7525

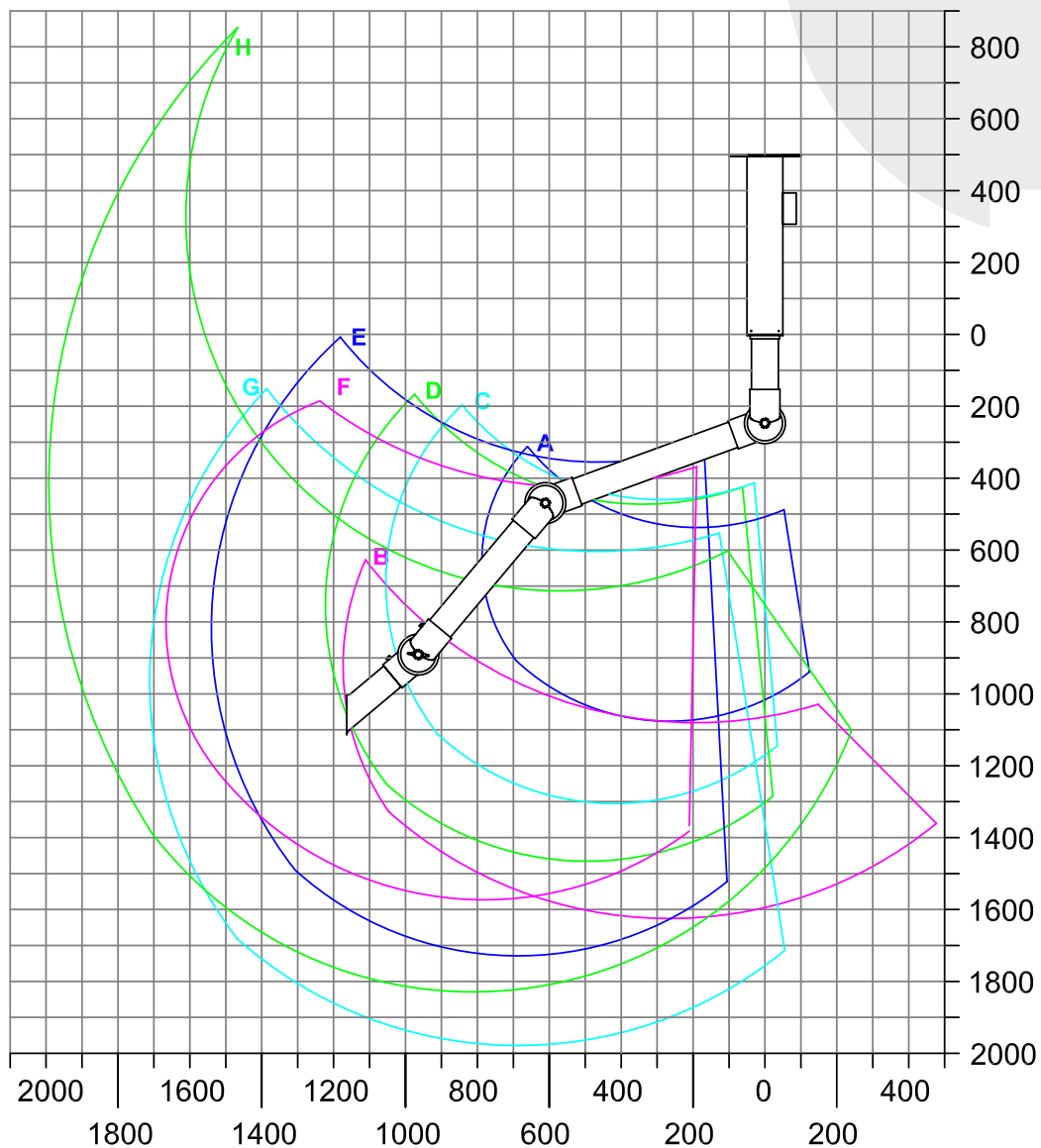
*The working area of the arm is defined from the center of the opening of the accessory.
The working area changes according to type of accessory and positioning.*

When choosing the arm we recommend that the stationary working position of the accessory is not placed in the highest or lowest part of the working area.

(All measurements in mm)

System 75 – Aluminium (AL)

Ceiling Mounted (CM)



A: Model 75-3535-3-4 /-5	R: 795 mm
B: Model 75-3590-3-4 /-5	R: 1200 mm
C: Model 75-5545-3-4 /-5	R: 1060 mm
D: Model 75-6555-3-4 /-5	R: 1230 mm
E: Model 75-9065-3-4 /-5	R: 1550 mm
F: Model 75-9065-3-22-4 /-5	R: 1660 mm
G: Model 75-9090-3-4 /-5	R: 1730 mm
H: Model 75-9090-3-22-4 /-5	R: 1990 mm

Accessory: Extractor Tube No. 1-7525

The working area of the arm is defined from the center of the opening of the accessory.

The working area changes according to type of accessory and positioning.

When choosing the arm we recommend that the stationary working position of the accessory is not placed in the highest or lowest part of the working area.

(All measurements in mm)