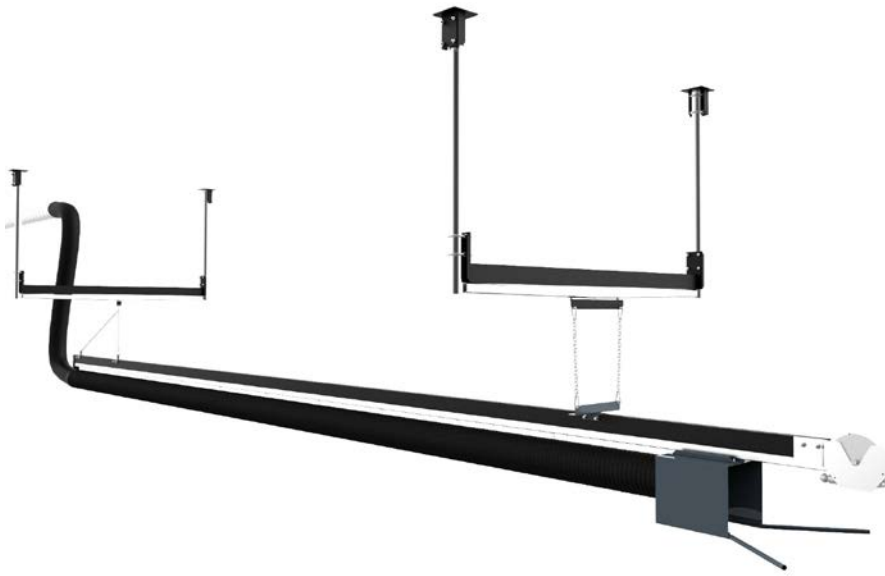




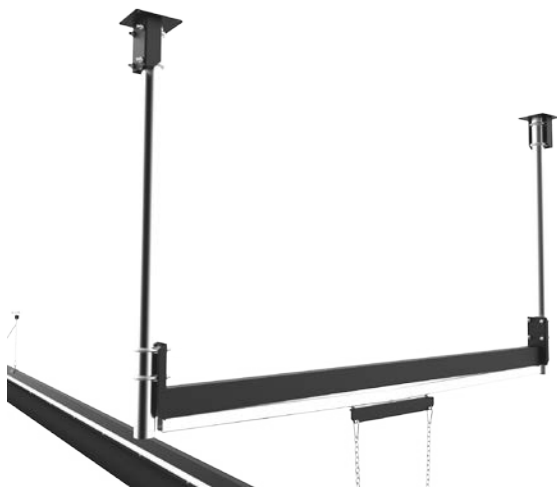
GEOVENT

FBER

Exhaust Rail System



Geovent FBER is a versatile and flexible rail system, intended for use in garages where a swift detachment of the extraction system is paramount. Geovent FBER is equipped with an extraction hood designed to follow the vertical exhaust stack when the vehicle is parked in the garage. Geovent FBER prevents exhaust from entering the garage.



Adjust the height of the Geovent FBER by adjusting the mounting brackets. Adjust according to the height of the exhaust stack of the engine in the garage.

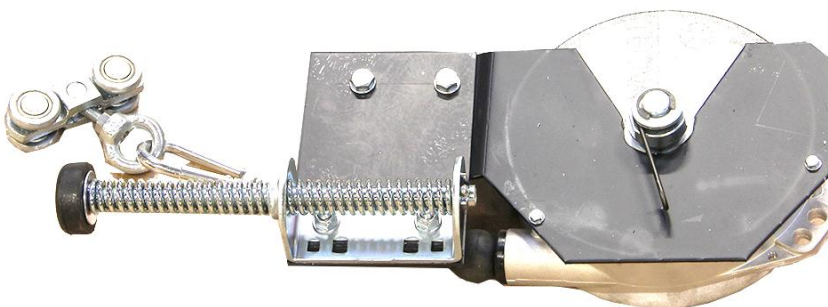
Note: Do not adjust the height by shortening the chains.

The rail needs a certain slack of the chain to move freely from side to side.



The top rails are curved as shown in the picture.

This causes the rail to return to its center position after use.



The balancer will pull the extraction hood to its initial position.

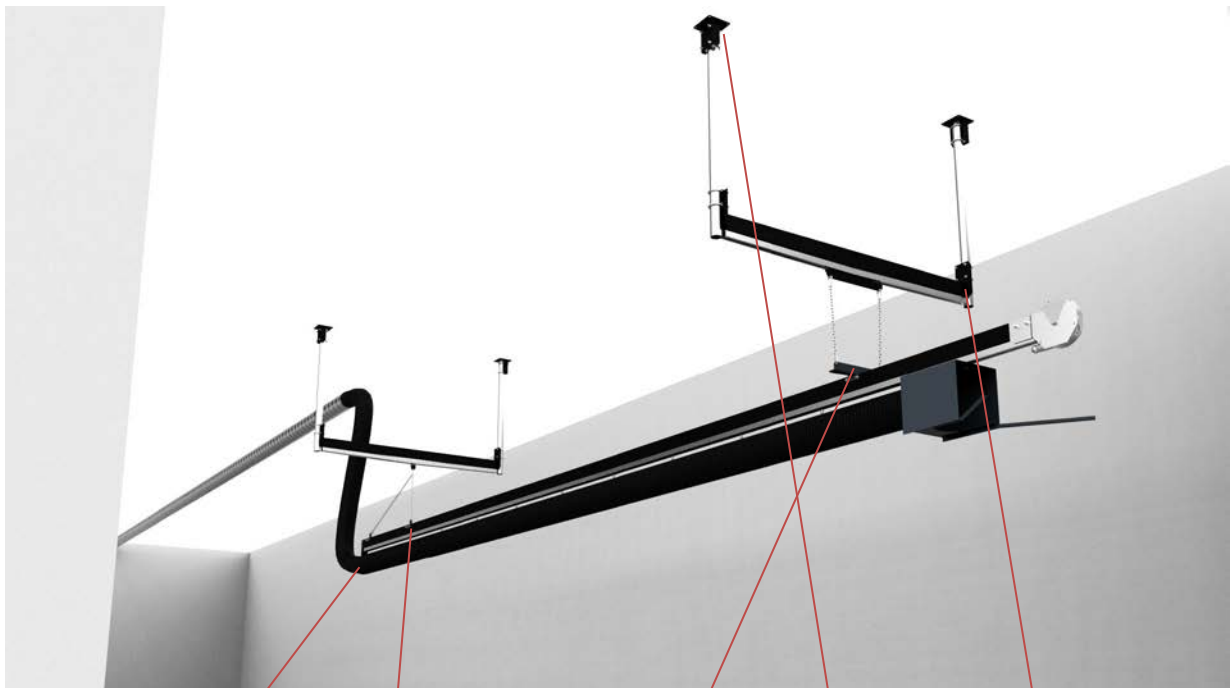
The spring stop is mounted on the balancer bracket.



Mounting the Geovent FBER

It is important to mount the Geovent FBER parallel to the normal position of the vehicle in the garage.

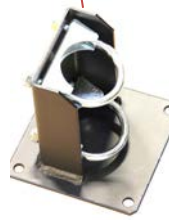
Note: When installing, adjust the height so the vertical exhaust stack is in the center of the exhaust hood. A fire engine filled with water will be considerably lower than an empty one. This should be taken into account when mounting the rail.



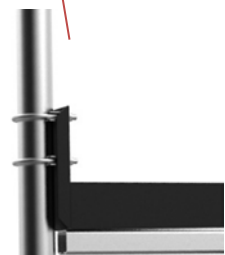
End hose
bracket



Rail brackets



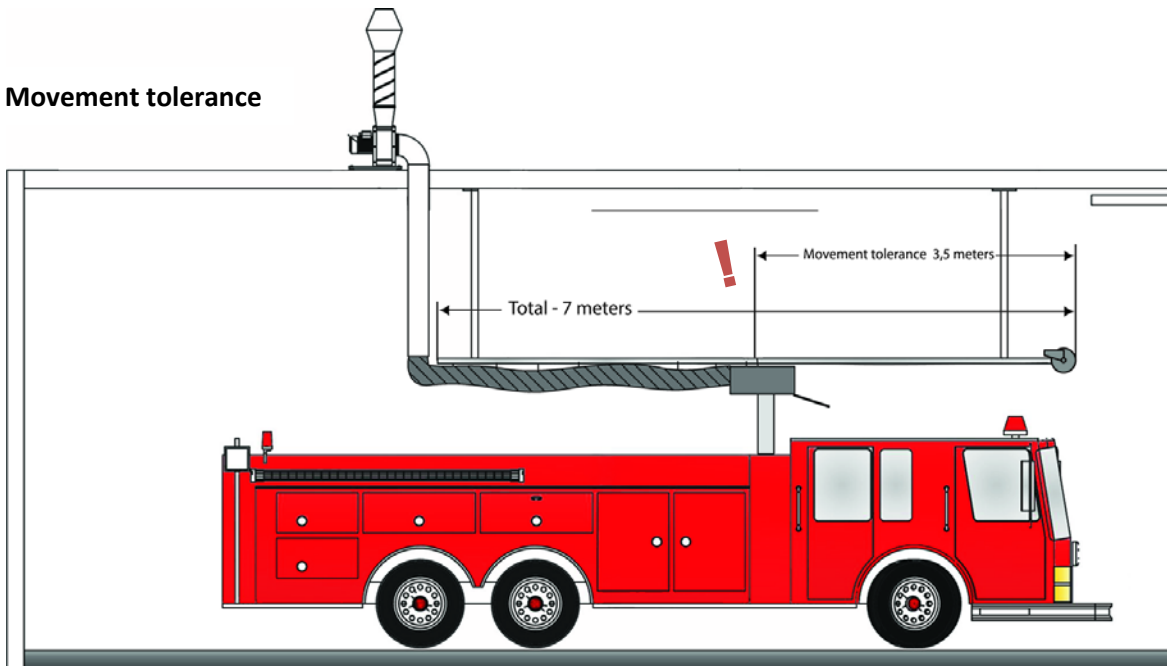
Ceiling bracket



Height adjustment bracket.



Movement tolerance



When ordering, please take into account the placement of the exhaust stack on the vehicle.

Normally the rail is 7 meters. The effective length of travel is only 3,5 meters.

Attempting to use the rail more than 3,5 meters can cause damage to the rail in which case Geovent does not assume liability.

Dimensions

