

# Fan

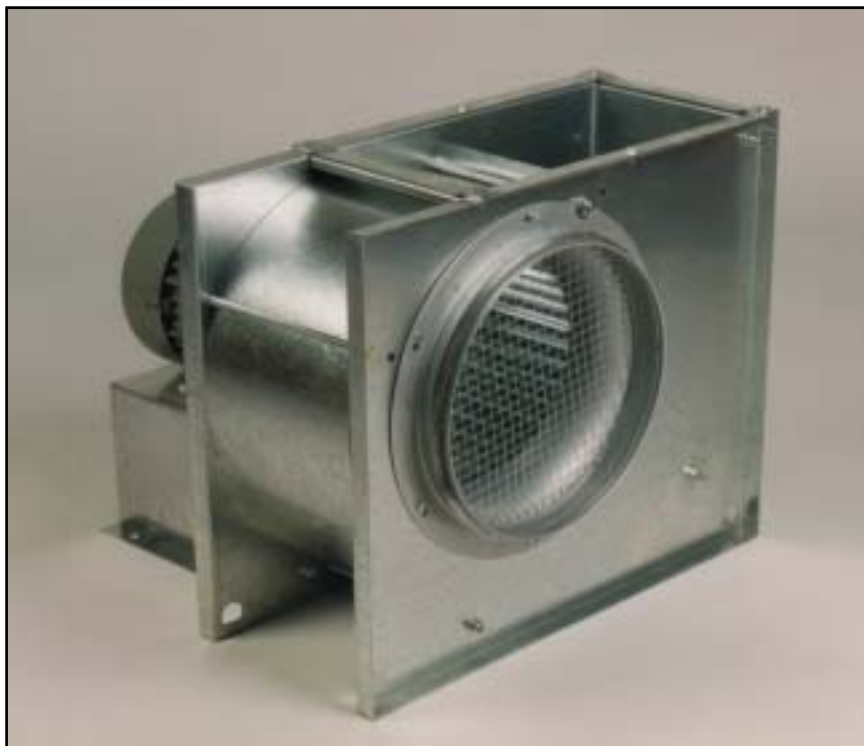
## LSKG/MSKG 280 - 450

GEOVENT centrifugalfan LSKG and MSKG with forward curving impellers is used for extraction within the industry or for comfort ventilation, dependent on the variant. The fan is made of 100% galvanised steel for optimum corrosion resistance and therefore, it is suitable for outdoor installation on the roof or on the wall. It is compatible with Soundbox system 1-2-3.

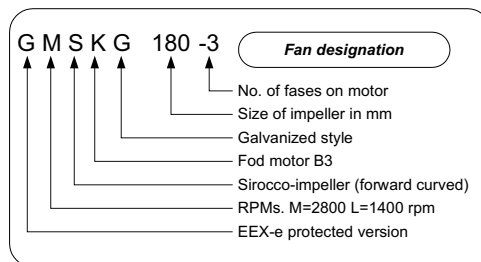
4

### Effective spot extraction

Geovent full-galvanised fan



Directly driven by a B3 flange motor, sealing class IP 54. The fan can be delivered with a number of options, such as soundproof box, pressure connector, supporting angles with vibration absorbers dimensioned to the individual fan, flex connection, motor protection switch and pressure monitor.



Ordering table - size 280 - 450				
Art.no.	Model	[kW]	[Volt]	[Ampere]
33-203	MSKG 280	5,50	3x400	11,40
33-202	MSKG 280	7,5	3x400	14,90
34-001	LSKG 315	4,00	3x400	8,70
34-003	GLSKG 315	4,00	3x400	8,70

Ordering - size 315 - 450				
Art.no.	Model	[kW]	[Volt]	[Ampere]
34-203	MSKG 315	11,00	3x400	21,00
34-204	MSKG 315	15,00	3x400	28,00
34-501	LSKG 355	5,50	3x400	12,40
35-001	LSKG 400	7,50	3x400	15,20
35-501	LSKG 450	11,00	3x400	22,00

# GEOVENT

Brevo B.V.  
 Dokwerkerstraat 3  
 2984 BJ Ridderkerk  
 Telefoon 0180-417344, Fax 0180-411563  
 Email : [info@brevo.nl](mailto:info@brevo.nl), Web : [www.puntafzuiging.nl](http://www.puntafzuiging.nl)

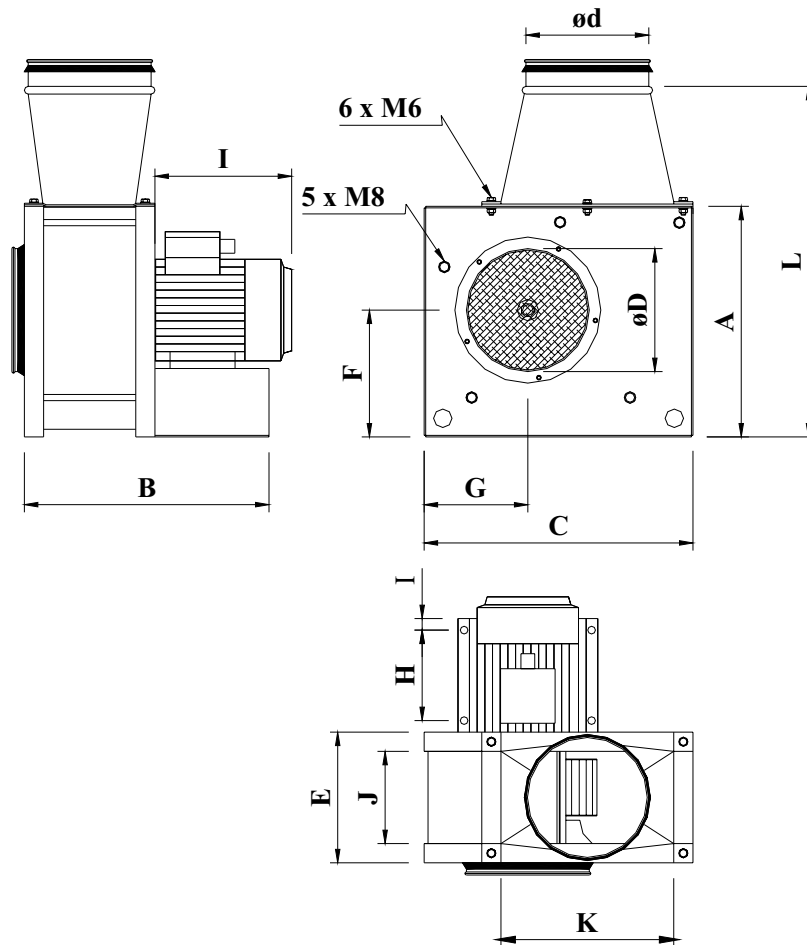


# Fan

LSKG/MSKG 280 - 450

# Dimensions

4



Dimensions, Fan LSKG/MSKG 280 - 450

Model	A	B	C	D	E	F	G	H	I	J	K	L	Weight
MSKG 280	455	515	545	315	235	260	215	235	174	185	325	680	87 kg
LSKG 315	510	550	600	315	260	290	240	190	335	210	400	720	63 kg
GLSKG 315	510	550	600	315	260	290	240	190	335	210	400	720	63 kg
MSKG 315	510	570	600	315	260	290	240	190	478	210	400	720	125 kg
MSKG 315	510	570	600	315	260	290	240	190	478	210	400	720	143 kg
LSKG 355	570	655	680	400	284	329	272	190	335	234	450	770	91 kg
LSKG 400	650	687	760	450	310	370	305	300	374	260	500	945	105 kg
LSKG 450	715	915	850	500	340	408	340	354	478	290	560	1045	111 kg

## GEOVENT

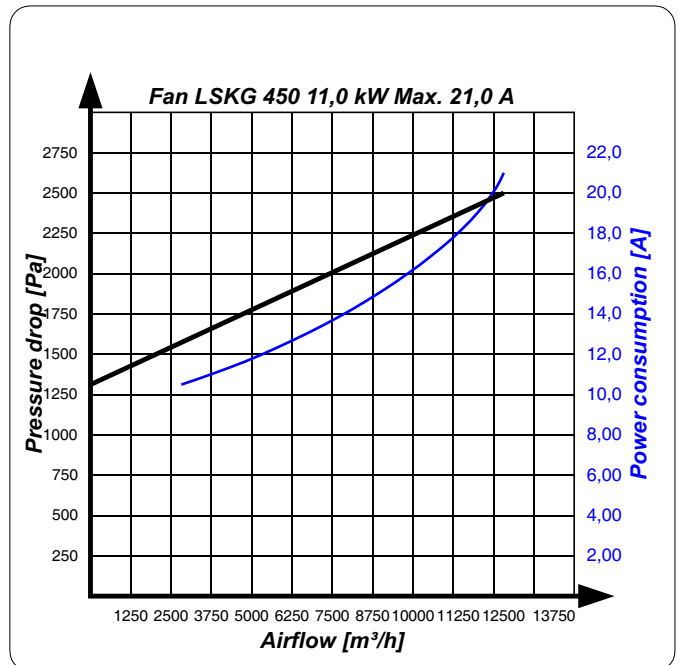
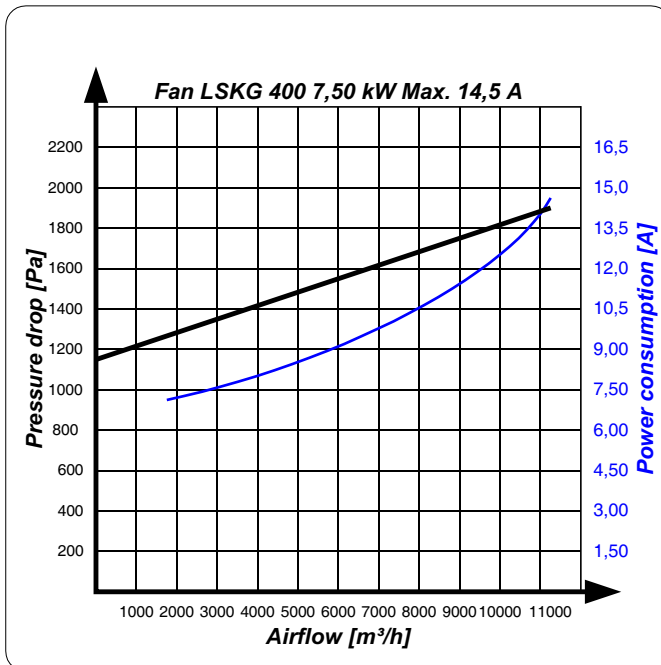
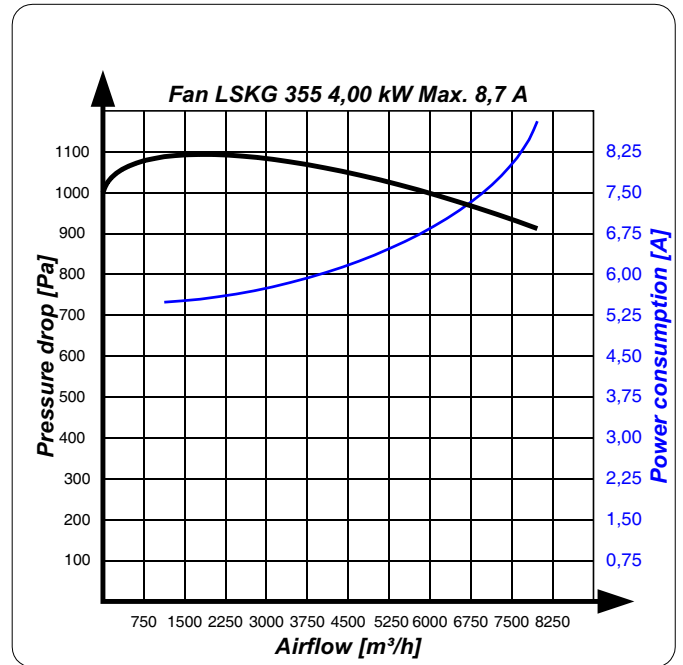
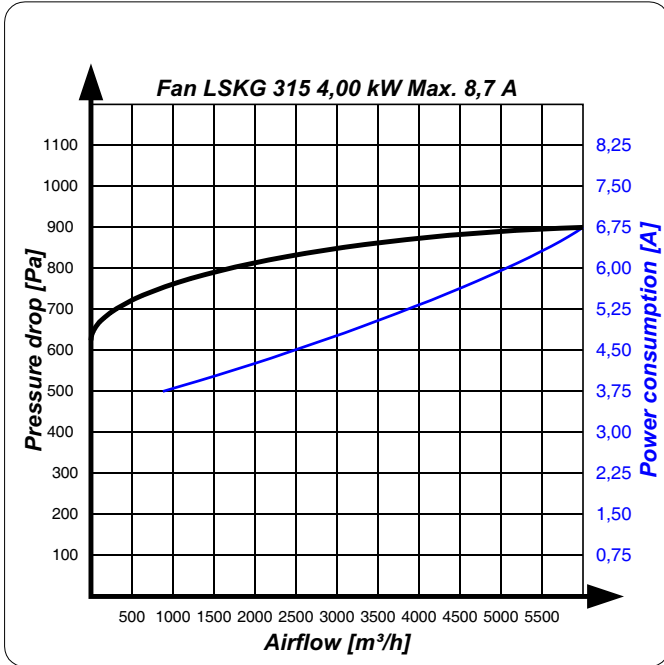
Brevo B.V.  
 Dokwerkerstraat 3  
 2984 BJ Ridderkerk  
 Telefoon 0180-417344, Fax 0180-411563  
 Email : [info@brevo.nl](mailto:info@brevo.nl), Web : [www.puntafzuiging.nl](http://www.puntafzuiging.nl)



# Fan

LSKG 315 - 450

# Pressure



The airflow measurements are done without the use of a outlet flange and with a temperature at 20°C. The pressure drop is measured in Pascal indicating the statistic pressure.

# GEOVENT

Brevo B.V.  
 Dokwerkerstraat 3  
 2984 BJ Ridderkerk  
 Telefoon 0180-417344, Fax 0180-411563  
 Email : [info@brevo.nl](mailto:info@brevo.nl), Web : [www.puntafzuiging.nl](http://www.puntafzuiging.nl)







