

Exhaust Nozzles



Rubber Nozzle type SA



Nozzle type ST



Exhaust Nozzle SK



Nozzle type SE



Rubber Nozzle



Nozzle type SB w/ compressed air and AU2 hood w/ foot

GEOVENT

Exhaust nozzle

Accessory for car extraction

The Geovent Nozzle with spring-loaded flap, which works both as lid and clamp fitting, is executed in powder enamelled (RAL 1007) steel. Available in the dimensions 80, 100, 125, 150 mm as well as an extended diameter of 100/130 and 125/150 mm. The Nozzle has an outlet for carbon monoxide testing..

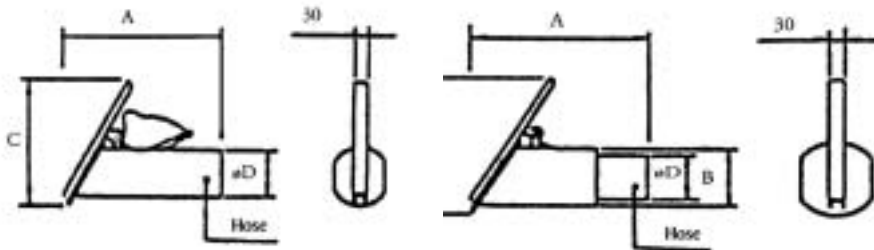
3

Effective spot extraction

Nozzles with outlet or CO-measuring



The Nozzles are suitable for most cars/lorries with a single exhaust pipe. The Nozzle may be mounted on the hose system by means of a Connecting Piece, Hose Hoist, Channel Duct and on the Hose Reel.



Nozzle fixed to a car.
Recommended airflow volume
300 - 600 m³

Application	Model	Rec. airflow [m ³ /h]	Art.no.	All measurements in mm			
				A	B	C	D
Cars	80	300-400	06-008	340	-	215	75
	100	400-600	06-009	340	-	260	100
Vans and smaller lorries	125	600-800	06-029	345	-	320	125
	100/130	400-600	06-010	355	133	355	100
Larger lorries	125	600-800	06-029	345	-	320	125
	150	600-1200	06-028	380	-	380	152
	125/150	600-800	06-007	330	152	346	125
Tractors and construction machinery	150	600-1200	06-028	380	-	380	152

GEOVENT

Brevo B.V.
Dokwerkerstraat 3
2984 BJ Ridderkerk
Telefoon 0180-417344, Fax 0180-411563
Email : info@brevo.nl, Web : www.puntafzuiging.nl



Nozzle type ST

for exhaust gasses

Geovent Nozzle type ST, for exhaust gasses with adjustable binding nippers for fixing on exhaust pipes. Neopren rubber for protection of petticoat. Is made of epoxy painted steel Ral 1007. Available with or without a damper in the dimensions $\varnothing 100$, $\varnothing 125$ & $\varnothing 150$ mm. Also available with expanded diameter in the dim. 150-125 & 180-150mm.

3

Effective spot extraction

Nozzle type ST, epoxy painted with Nipper.



The Nozzle is very suitable for use on most cars or trucks with a single exhaust pipe. The nozzle can be mounted on a hose system with a coupling, hose lift, channel duct or on a hose reel.

Nozzle ST mounted on a hose lift.

Recommended air flow for smaller trucks w/ $\varnothing 125$ nozzle: 600-800 m³/h. Recommended air flow for bigger trucks w/ $\varnothing 150$ nozzle: 600-1200 m³/h.

Ordering table for Nozzle type ST

Art. No.	Model	Rec. Air flow. [m ³ /h]	Hose dia. [mm]
06-150	Nozzle type ST-100	400-600	$\varnothing 102$ mm
06-151	Nozzle type ST-125	600-800	$\varnothing 127$ mm
06-152	Nozzle type ST-150	600-1200	$\varnothing 152$ mm
06-153	Nozzle type ST-150-125	600-800	$\varnothing 127$ mm
06-154	Nozzle type ST-180-150	600-1200	$\varnothing 152$ mm
12-006	Throttle damper $\varnothing 100$ - easy	to install in nozzle	
12-012	Throttle damper $\varnothing 125$ - easy	to install in nozzle	
12-007	Throttle damper $\varnothing 150$ - easy	to install in nozzle	



GEOVENT

Brevo B.V.
 Dokwerkerstraat 3
 2984 BJ Ridderkerk
 Telefoon 0180-417344, Fax 0180-411563
 Email : info@brevo.nl, Web : www.puntafzuiging.nl



Rubber

The Geovent Rubber Nozzles are used within the car industry for the removal of exhaust gas. The Rubber Nozzle fits practically all exhaust pipes, including smaller twin pipes. It is fitted to an exhaust hose, which is used with Geovent Hose Lift, Channel Duct and Hose Reel.

3

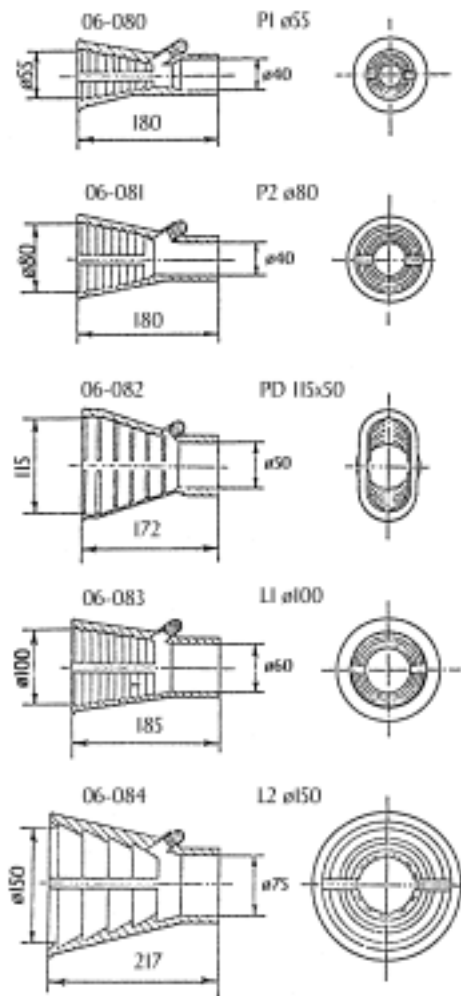
Effective spot extraction

Geovent conical Rubber Nozzles.



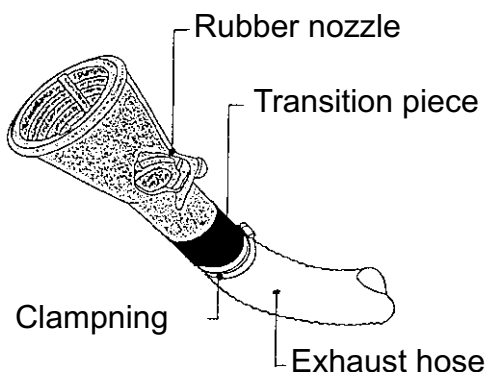
The Geovent Rubber Nozzles are executed in heat-resistant EDPM rubber, ensuring a temperature flexibility of -40 to 250 C in the work area.

The Rubber Nozzle is supplied with a removable plug and internal sections, fixing the hood on the exhaust pipe.



Ordering table - Rubber Nozzles

	Art.no.	Model
A	06-080	Rubber Nozzle P1 \varnothing 55mm
B	06-081	Rubber Nozzle P2 \varnothing 80mm
C	06-082	Rubber Nozzle PD 115x50mm (oval)
D	06-083	Rubber Nozzle L1 \varnothing 100mm
E	06-084	Rubber Nozzle L2 \varnothing 150mm
	06-090	Transition piece P1/P2 => \varnothing 80 mm hose
	06-091	Transition piece P1/P2 => \varnothing 100 mm hose
	06-085	Transition piece PD => \varnothing 80 mm hose
	06-086	Transition piece L1 => \varnothing 100 mm hose
	06-088	Transition piece L1 => \varnothing 80 mm hose
	06-089	Transition piece L2 => \varnothing 100 mm hose



GEOVENT

Brevo B.V.
 Dokwerkerstraat 3
 2984 BJ Ridderkerk
 Telefoon 0180-417344, Fax 0180-411563
 Email : info@brevo.nl, Web : www.puntafzuiging.nl



Rubber Nozzle

Type SA for car exhaust

Geovent Rubber Nozzle type SA, for exhaust gasses. The Nozzle is available with or without a nipper and also with a damper, which opens in the moment the nozzle is fixed to the exhaust pipe. The Nozzle fits almost every exhaust pipe and do not scratch the car. Available in the following dimensions: $\varnothing 80$ - $\varnothing 100$ - $\varnothing 125$ - $\varnothing 150$ mm.

3

Effective spot extraction

Rubber nozzles type SA with nippers



The Rubber Nozzle is very suitable for most cars, trucks and construction machines. The Nozzle can be mounted on a hose system with a coupling, hose lift, channel duct or on a hose reel.



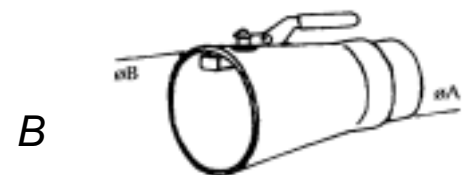
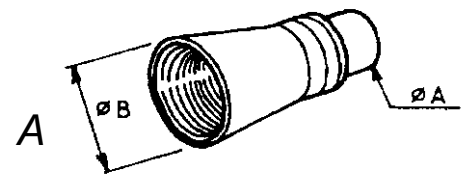
Rubber Nozzle w/nipper fixed to a car. Recommended air flow 300-600m³/h

Recommended air flow for smaller trucks: 600-800 m³/h with the use of a $\varnothing 125$ mm nozzle.

Recommended air flow for bigger trucks or construction machines: 600-1200 m³/h with the use of a $\varnothing 125$ or $\varnothing 150$ mm nozzle.

Ordering tabel for Rubber Nozzle type SA

Pos.	Art. No.	Model	Dimensions
A	06-166	Rubber Nozzle tSA $\varnothing 100/130$ mm w/o holder	$\varnothing A=100$ mm $\varnothing B=150$
B	06-163	Rubber Nozzle SA $\varnothing 100/150$ mm w/o damper	$\varnothing A=100$ mm $\varnothing B=150$
	06-164	Rubber Nozzle SA $\varnothing 125/190$ mm w/o damper	$\varnothing A=125$ mm $\varnothing B=190$
	06-165	Rubber Nozzle SA $\varnothing 150/190$ mm w/o damper	$\varnothing A=150$ mm $\varnothing B=190$
C	06-160	Rubber Nozzle SA $\varnothing 100/150$ mm w/ damper	$\varnothing A=100$ mm $\varnothing B=150$
	06-161	Rubber Nozzle SA $\varnothing 125/190$ mm w/ damper	$\varnothing A=125$ mm $\varnothing B=190$
	06-162	Rubber Nozzle SA $\varnothing 150/190$ mm w/ damper	$\varnothing A=150$ mm $\varnothing B=190$



GEOVENT

Brevo B.V.
 Dokwerkerstraat 3
 2984 BJ Ridderkerk
 Telefoon 0180-417344, Fax 0180-411563
 Email : info@brevo.nl, Web : www.puntafzuiging.nl



Rubber Nozzle

The Geovent rubber nozzle type SE, for exhaustgas. The nozzle has an oval shape with at 60° elbow and a nipper, which makes the nozzle very easy to fit on the exhaust pipe. The nozzle fits almost every exhaust pipe (incl. double pipes!) and is gentle to the vehicle. Available in the following dimensions ø80-ø100-ø125-ø150

Effective spot extraction

Rubber nozzle SE with nippers



The rubber nozzle is suitable for most cars, trucks or construction machines etc. The nozzle can be mounted on the hose system with a coupling, hose lift, channel duct or on a hose reel.



- Recommended air flow for cars: 300-600 m³/h with the use of a ø100 nozzle.
- Recommended air flow for smaller trucks: 600-800 m³/h with the use of a ø125 nozzle.
- Recommended air flow for bigger trucks or construction machines: 600-1200 m³/h with the use of a 150 nozzle.

Ordering tabel for Rubber Nozzle type SE	
Art.no.	Model
-Nozzle for cars	
06-170	Rubber nozzle type SE ø75 with nipper. Oval with a 60° elbow. Max ø150mm exhaust pipe
06-171	Rubber nozzle type SE ø100 with nipper. Oval with a 60° elbow. Max ø150mm exhaust pipe
06-172	Rubber nozzle type SE ø125 with nipper. Oval with a 60° elbow. Max ø150mm exhaust pipe
-Nozzle for trucks	
06-163	Rubber nozzle type SE ø125 with nipper. Oval with a 60° elbow. Max ø200mm exhaust pipe
06-164	Rubber nozzle type SE ø150 with nipper. Oval with a 60° elbow. Max ø200mm exhaust pipe



GEOVENT

Brevo B.V.
 Dokwerkerstraat 3
 2984 BJ Ridderkerk
 Telefoon 0180-417344, Fax 0180-411563
 Email : info@brevo.nl, Web : www.puntafzuiging.nl



Nozzle SB

Art.no. 06-350

The Geovent Nozzle SB is used for the extraction of exhaust gas in connection with Hose Lift, Channel Duct or Hose Reel. The Nozzle SB fits completely airtight to the exhaust pipe and thus a large degree of comfort is secured for the user, since connection and disconnection is very simple. When using additional equipment, automatic release of the exhaust pipe is an option.

3

Effective spot extraction

Geovent Nozzle SB for car exhaust gas



When the sliding valve on the Nozzle is activated, the tight-fitting air bellows are inflated and have a firm grip on the exhaust pipe.

The Nozzle, which is available both for cars and lorries, may be mounted on all existing systems.

The Nozzle SB is connected to clean and dry compressed air at 1 bar.

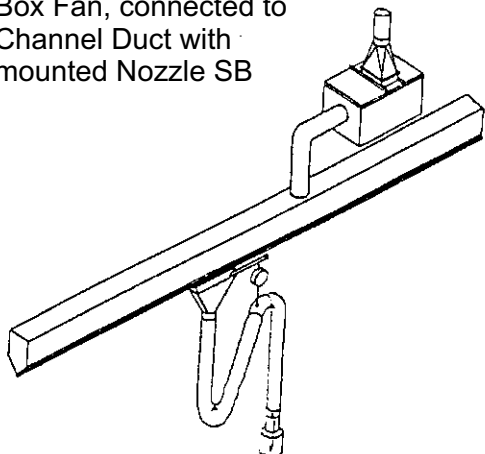


Ordering table - Nozzle SB

Art.no.	Model
06-350	Nozzle SB ø100 mm with ø80 mm connection
06-354	Nozzle SB ø100 mm with ø100 mm connection
06-351	Nozzle SB ø160 mm with ø125 mm connection
06-355	Nozzle SB ø160 mm with ø150 mm connection
06-363	Compressed Air Regulator for Nozzle SB

Compressed Air Feed Set may be supplied in various models, depending on the job

Box Fan, connected to Channel Duct with mounted Nozzle SB



Nozzle SB mounted on an automotive trolley. When the trolley reaches the end station the pressure in the Nozzle is released and automatically it lets go of the exhaust pipe.

GEOVENT

Brevo B.V.
Dokwerkerstraat 3
2984 BJ Ridderkerk
Telefoon 0180-417344, Fax 0180-411563
Email : info@brevo.nl, Web : www.puntafzuiging.nl



AU2 Hood

For extraction of exhaust gasses.

The Geovent AU2 hood for extraction of exhaust gasses in combination with measurement of the engine on roll field etc. where there are a demand for extraction of big air volumes (up to 2000 m³/h). The hoods advantage versus a regular nozzle, is that it has no influence on the test result. The hood is fixed with a waste tray and includes a height adjustable stand.

3

Effective spot extraction

Geovent AU2 hood in $\varnothing 150$ and $\varnothing 200$ mm



Connection piece	$\varnothing 150$ & $\varnothing 200$ mm
Height, stand	500 mm height adjustable (special heights upon request)
Hood	Epoxy painted steel
Stand	Electro galvanised steel
Rec. air flow	$\varnothing 150 = 800-1200\text{m}^3/\text{h}$ $\varnothing 200 = 1000-2000\text{m}^3/\text{h}$

Ordering tabel for AU2 hood

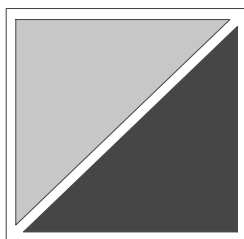
Art.no.	Model
07-035	AU2 hood $\varnothing 150\text{mm}$ with hight adjustable stand
07-040	AU2 hood $\varnothing 200\text{mm}$ with hight adjustable stand



GEOVENT

Brevo B.V.
Dokwerkerstraat 3
2984 BJ Ridderkerk
Telefoon 0180-417344, Fax 0180-411563
Email : info@brevo.nl, Web : www.puntafzuiging.nl





Documentatie en handleidingen van Geovent zijn in de Engelse taal. Enkele exemplaren zijn ook in de Duitse taal verkrijgbaar. Geovent heeft echter geen Nederlandstalige versie. Door continue productontwikkeling zijn de productbladen aan wijziging onderhevig. Op onze website www.puntafzuiging.nl zullen wij steeds de nieuwste publicaties van Geovent publiceren.

U moet deze informatie zien als uitbreiding op de technische informatie die wij op onze website PuntAfzuiging.nl hebben opgenomen.

Heeft u aanvullende vragen, neem dan gerust contact met ons op.

Brevo B.V.
Dokwerkerstraat 3
2984 BJ Ridderkerk
Telefoon 0180-417344, Fax 0180-411563
Email : info@brevo.nl, Web : www.puntafzuiging.nl