



GEOVENT

FAN

LEF/MEF 250 - 630 – and LEX/MEX ATEX versions

GEOVENT centrifugal fan LEX and MEX with closed backward curving B-wheel and directly driven flange motor. The fan is used for extraction within the industry or for comfort ventilation. The fan has a high efficiency up till 87 % and is suitable for PID/constant pressure regulation. The fan is made of 100% galvanized steel for optimum corrosion resistance and therefore, it is suitable for outdoor installation on the roof or on the wall. There is a complete program of accessories, and the fan can be delivered with a number of options, such as flex connection, mountings, rain shield, motor protection, pressure monitor and soundproof box. As standard we supply supporting angels with vibration absorbers, inlet nozzle with net and clamp for mounting the outlet flange.

The fan is also supplied in ATEX version according to the 94/9/EF directive. Then the type is called LEX/MEX, and it is supplied as standard with EExE motor. Other variants are offered on inquiry.

The fan can, on inquiry, be supplied in an acid proof steel version (ANSI 316L) or with built-in frequency converter, two-speed motor, with 6- or 8- poled motors, motors with special voltage or higher efficiency, special high temperature version a.s.o.

Air volume up to 24.100 m³/h

Pressure up to: 4.500 Pa



Technical data / Other data / Features

Motor: Directly driven by a B5- Flange motor. Sealing class IP-55

Voltage: 3x400V or 1x230V / 50 Hz

HOUSE: Made of hot-galvanized plate. All screws and bolts are electrolytic galvanized. Inclusive supporting angels with vibration absorbers, inlet nozzle with net and clamp for mounting the outlet flange.

DUST AMOUNTS AND CORN SIZE

The dust amount from the extracted air may not exceed 12 g/m³. The size of the dust particles may not exceed 6 mm³. The dust/steams may not be sticky.

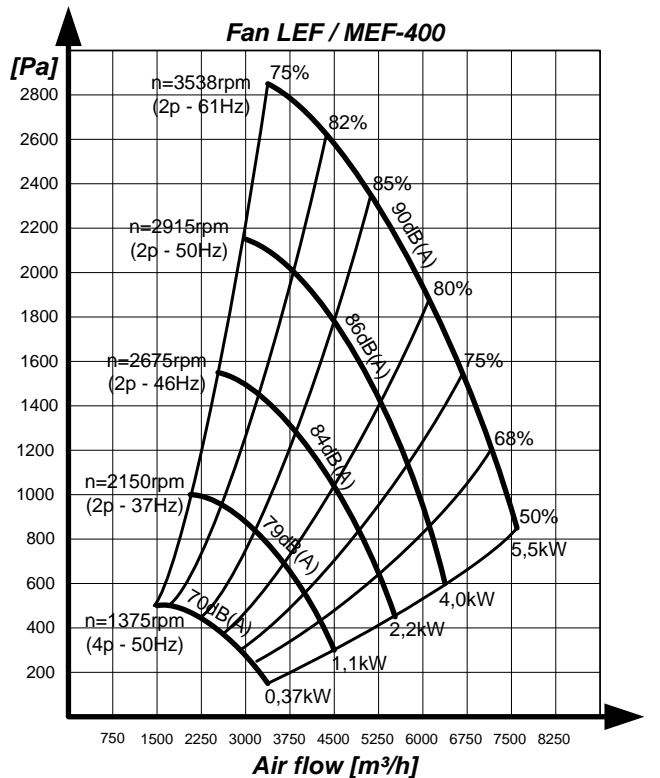
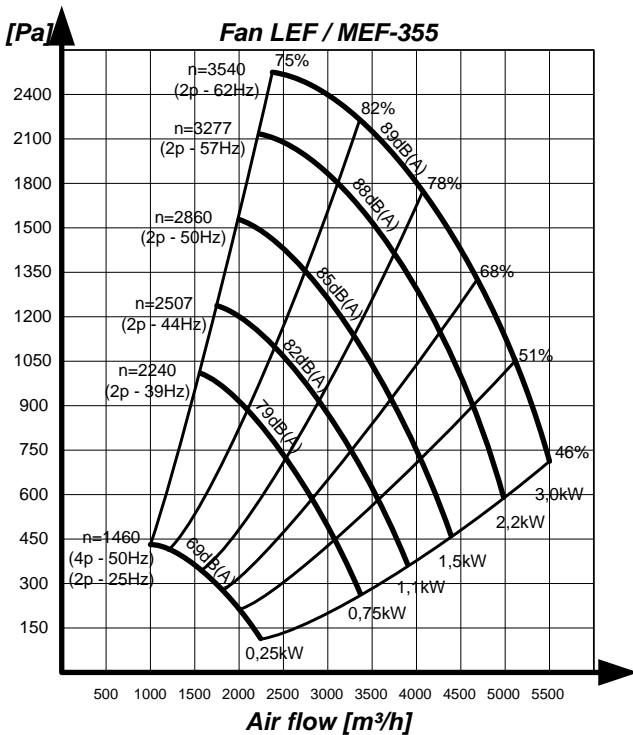
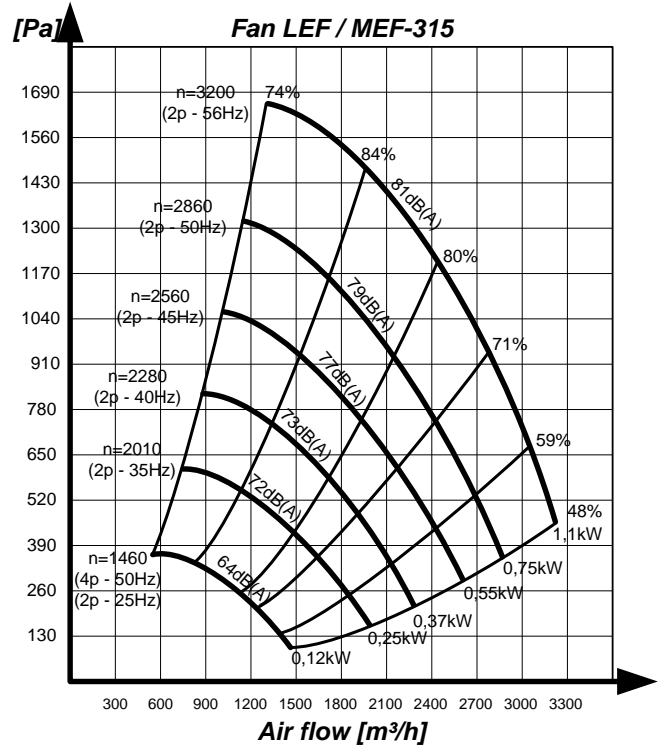
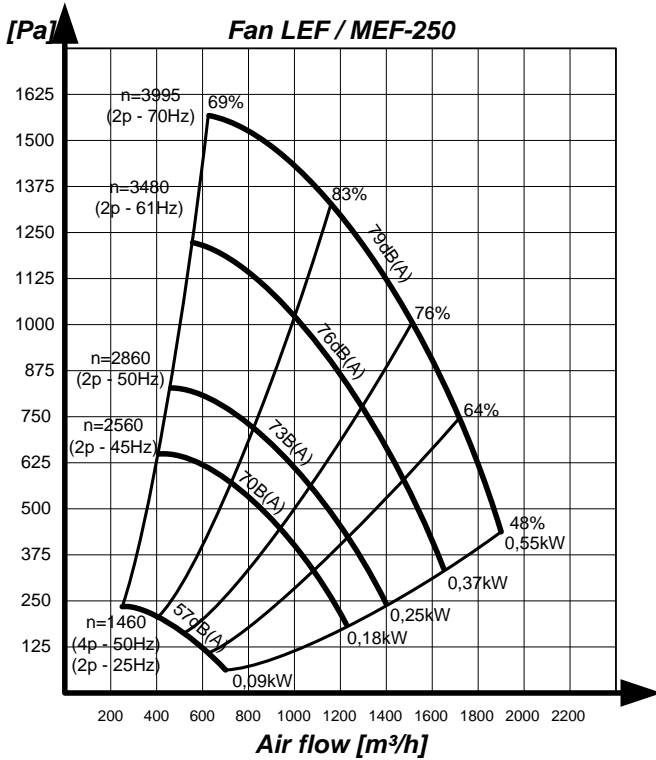
TEMPERATURE AREA

Surrounding temperature: +40°C

Temperature extracted air: +80°C

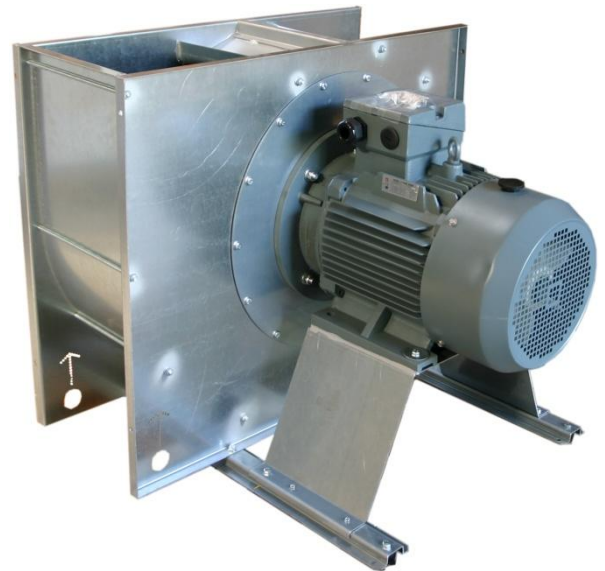
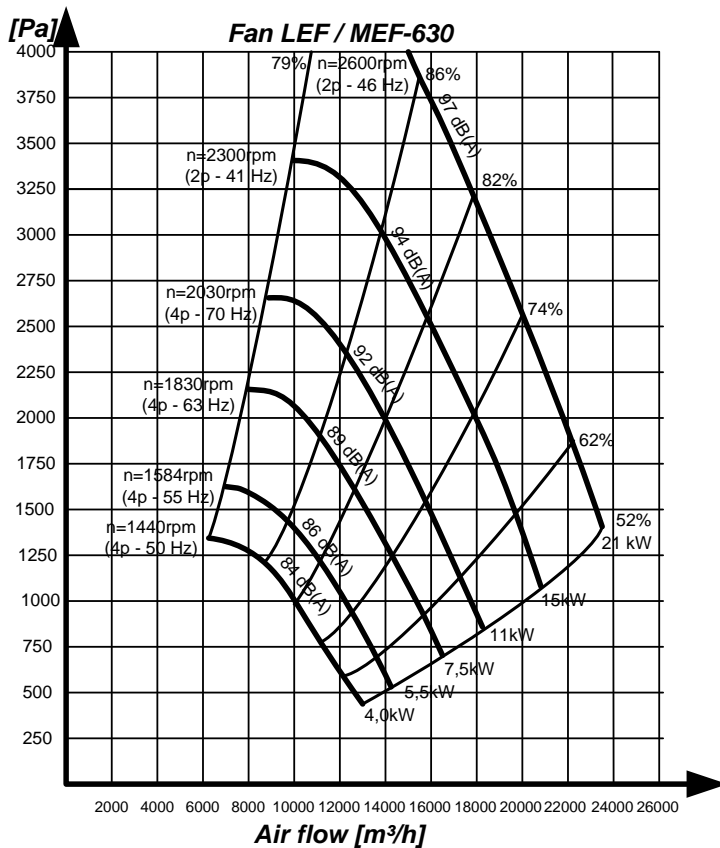
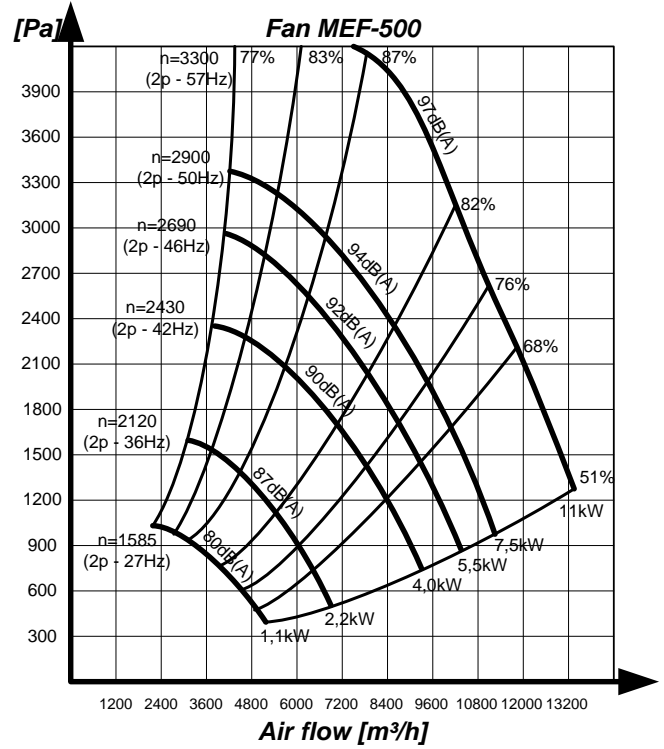
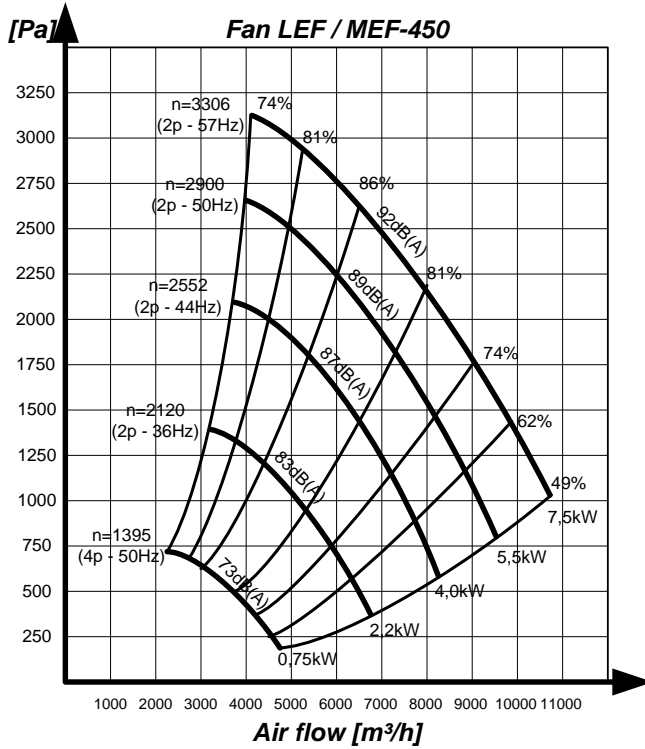


Pressure drop - LEF/MEF





Pressure drop - LEF/MEF



Motor size from 0.25 to 4 kw is supplied as standard with a B5 flange. By 5.5 kw motors and larger or special motors with higher weight than standard, the fan is supplied with flange/foot B35 motor.

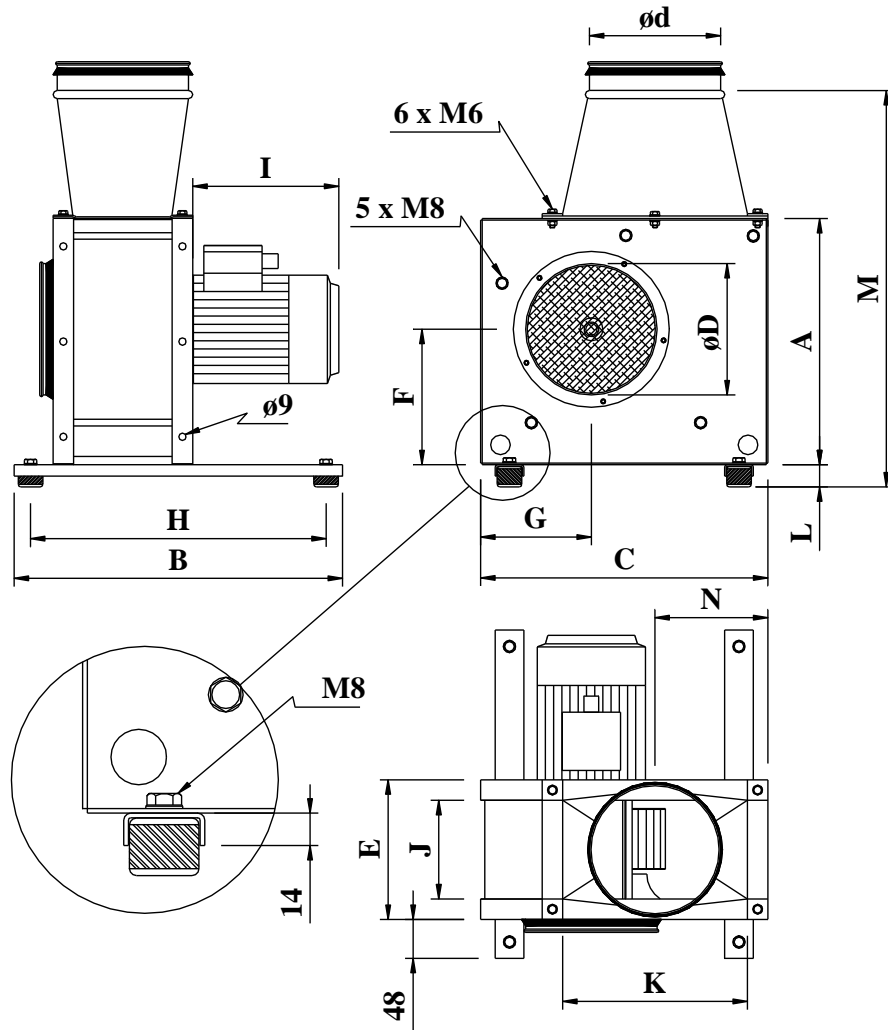


GEOVENT

FAN

LEF/MEF 250 - 630 – and LEX/MEX ATEX versions

Dimension sketches



Dimension table, Fans LEF/MEF (LEX/MEX)

Type	A	B	C	D	E	F	G	H	I	J	K	M	N	Weight
250	410	500	500	250	215	230	210	460	**	170	320	637	185	38 kg*
315	510	550	600	315	260	290	240	460	**	210	400	720	225	43 kg*
355	570	655	680	400	284	329	272	460	**	234	450	797	250	48 kg*
400	648	800	756	400	308	367	304	760	**	260	500	965	275	56 kg*
450	715	800	850	500	340	408	340	760	**	290	560	1045	305	71 kg*
500	758	800	871	500	345	421	362	760	**	295	510	1065	263	81 kg*
630	989	800	1175	630	446	563	467	760	**	400	800	1340	425	135 kg*

*/** - depends on motor choice. NB: By LEX/MEX versions the motor will typically have a larger physical measure than standard versions, and therefore it will also have a higher net weigh



Accessories

Soundproof box for reduction of the sound level.
The fan is enclosed in a closed wind- and waterproof galvanized box.
The sound is typically subdued to 8-15 dB(A)



Wall bracket, hot-galvanized, is supplied in two sizes,
For mounting the fan on wall
Must be used with supporting angels

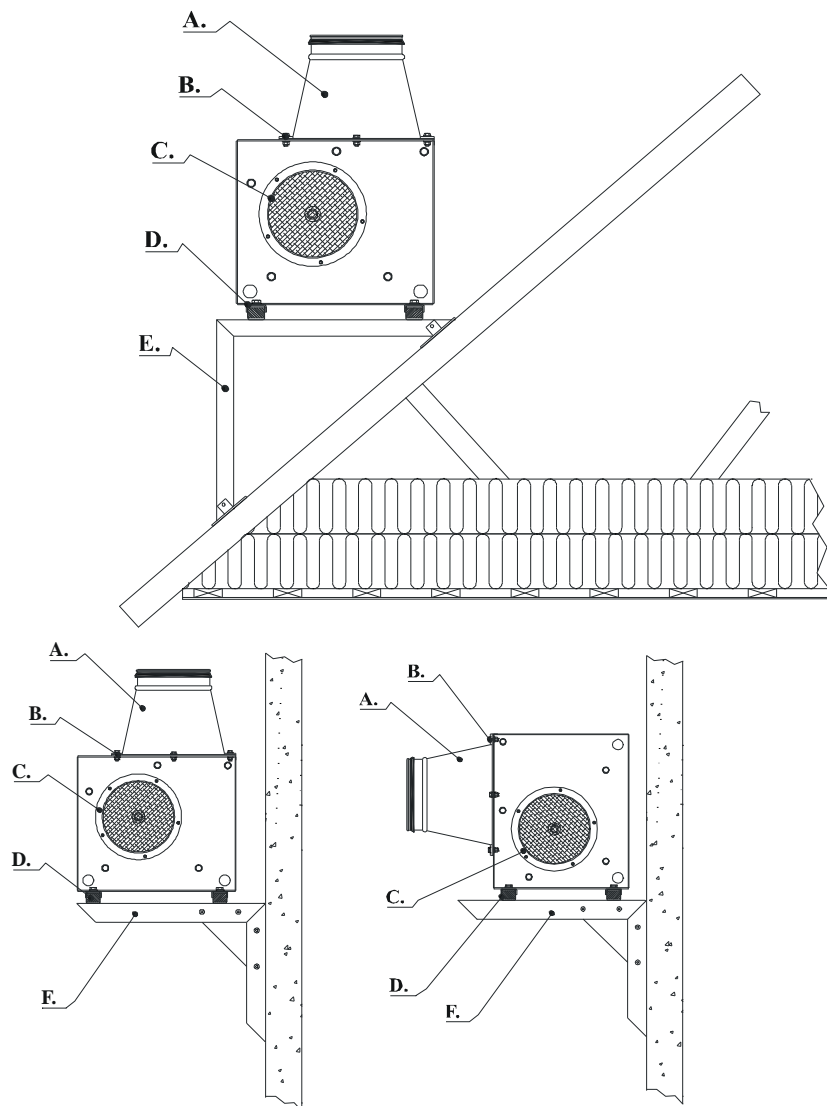


Galvanized rain shield for the fan.
Protects the motor from water intrusion



Outlet flange, hot-galvanized, is supplied in several
Different sizes. Is used as transition from the fan's square yield
to a round channel.





- A. Outlet flange, transition from the fan's square yield to a round channel. The outlet flange, which is a sleeve, has an EPDM rubber packing in sealing class C. By using vibration dampers a flexible connection between the outlet flange and the yield can be inserted.
- B. Clamp, galvanized, is used for attachment of the outlet flange with the aid of 6 pcs. M6 screws. After mounting you must use joint filler.
- C. Inlet in sleeve, galvanized, is provided with net to protect the fans impeller and EPDM rubber packing in sealing class c. By using vibration dampers a flexible connection between the inlet and the piping can be inserted.
- D. Supporting angels, galvanized, is supplied with or without vibration dampers depending on the application. The vibration dampers are adjusted to each Fan.
- E. Roof bracket GB 15-45°, galvanized, is supplied with angel brackets on 500x1.000mm, so it is possible to saw off until you have the right pitch. The roof bracket is supplied with 4 pcs. Of mounting sheets with holes for the most common roofing tiles.
- F. Wall bracket, galvanized, is supplied as a complete set with screws for mounting the fan.



Ordering table

LEF/MEF 250 - 355			
Art.No.	Model	[kW]	[A]
33-701	LEF-250-3	0,25	0,8
33-702	MEF-250-3*	0,37	1
33-703	MEF-250-3*	0,55	1,4
33-704	LEF-250-1	0,25	1,9
33-705	MEF-250-1*	0,37	2,9
33-706	GLEF-250-3	0,25	0,8
33-708	GMEF-250-3*	0,37	1,4
34-651	LEF-315-3*	0,25	0,8
34-652	MEF-315-3*	0,55	1,4
34-653	MEF-315-3	0,75	1,8
34-654	MEF-315-3*	1,1	2,4
34-655	LEF-315-1*	0,25	2,9
34-656	MEF-315-1	0,75	4,5
34-657	GLEF-315-3*	0,25	0,8
34-658	GMEF-315-3	0,75	1,8
34-700	GMEF-355-3	1,5	3,3
34-701	LEF-355-3	0,25	0,8
34-702	MEF-355-3*	0,75	1,8
34-703	MEF-355-3*	1,1	2,4
34-704	MEF-355-3	1,5	3,3
34-705	MEF-355-3*	2,2	4,6
34-706	MEF-355-3*	3	6,1
34-707	MEF-355-1	1,5	9,1
34-708	LEF-355-1	0,25	1,9
34-709	GLEF-355-3	0,25	0,8

* = Presupposes the use of an external frequency converter.

LEF/MEF 400 - 630			
Art.No.	Model	[kW]	[A]
35-201	LEF-400-3	0,37	1,05
35-202	LEF-400-1	0,37	1,83
35-205	GLEF-400-3	0,37	1,05
35-203	MEF-400-3*	2,2	4,6
35-204	MEF-400-1*	2,2	8
35-206	MEF-400-3	4	8,8
35-206A	MEF-400-3*	5,5	11,1
35-207	GMEF-400-3	4,1	8,8
35-701	LEF-450-3	0,75	1,86
35-702	LEF-450-1	0,75	3,2
35-703	GLEF-450-3	0,75	1,86
35-705	MEF-450-3*	4	8,8
35-706	MEF-450-3	5,5	11,1
35-707	GMEF-450-3	5,5	11,1
35-708	MEF-450-3*	7,5	14,7
36-500	MEF-500-3	7,5	14,7
36-501	MEF-500-3*	11	20,6
36-502	MEF-500-3*	5,5	11,1
35-750	MEF-630-3*	22	39
35-750A	MEF-630-3*	15	27,5
35-751	LEF-630-3	4	8,3
35-752	LEF-630-3*	7,5	15,1
35-753	LEF-630-3*	11	21
35-755	LEF-630-3*	5,5	11,1
35-756	GLEF-630-3	4	8,3



ATEX ventilator LEX/MEX

Our series of atex fans with backward curving impellers are as standard supplied with EEx e motors, but can also be supplied with EEx d or EEx de motors.

The typical scope of application is zone 1, zone 2 and zone 22.

The construction is based on standard LEF/MEF, but has beside the ATEX motor, also protection against static and sparks in inlet.



MEX-500 ATEX fan in Acid proof ANSI 316L

For ATEX applications, where acid proof execution is needed, this can be offered. All plate parts, screws and bolts a.s.o. are supplied in Acid proof ANSI 316L and are subsequently stained. The wheel is either supplied in a special lacquered edition or in ANSI 316L.

NB: All volume current curves are as standard only 50 hz, in LEX/MEX atex versions.

Ordering table – LEX/MEX 250 - 630				
Art.No.	Model	(kW)	(Volt)	(Ampere)
37-510	LEX 250-3	0,25	3x400	0,80
37-520	MEX 250-3	0,37	3x400	1,00
37-530	LEX 315-3	0,25	3x400	0,80
37-540	MEX 315-3	0,75	3x400	1,75
37-550	LEX 355-3	0,25	3x400	0,80
37-560	MEX 355-3	1,50	3x400	3,30
37-570	LEX 400-3	0,37	3x400	1,05
37-580	MEX 400-3	4,00	3x400	8,80
37-590	LEX 450-3	0,75	3x400	1,86
37-591	MEX 450-3	5,50	3x400	11,10
37-592	MEX 500-3	7,50	3x400	14,70
37-593	LEX 630-3	4,00	3x400	8,30