



System 100 - Aluminium (AL)

Extraction arms

Table mounting	100 AL 2
Wall/Ceiling mounting	100 AL 3

Hoods

Metal hood 1-10024	100 AL 4
Metal hood 1-10024-5	100 AL 5
Round hood 1- 10035-5	100 AL 6
Metal hood 1-10036-5	100 AL 7
Metal hood 1-10036-5-5	100 AL 8
Round hood 1-10050-5	100 AL 9
Flat hood 1-1004228-5	100 AL 10

Brackets

U-profile 30-100-5	100 AL 11
Wall bracket 2-100-203	100 AL 12
Wall bracket 2-100-203-050	100 AL 13
Ceiling columns	100 AL 14

Other accessories

Reducer 4-100125	100 AL 15
Cover flange 4-250-250	100 AL 16
Support bracket 2-100-5	100 AL 17
Protective netting 5-18	100 AL 18

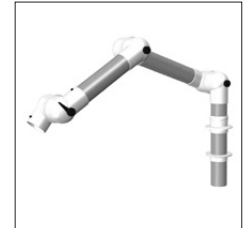


System 100 - Aluminium (AL)

All components RoHS-compatible.

Design:

- Extraction arm for mounting on table
- Working range 795 - 2130 mm
- Recommended airflow 140 to 400 m³/h
- Diameter of tube Ø100 mm
- Tubes made of anodized Aluminium - surface 10 µ
- Joints made of shatterproof, chemical resistant polypropylene (PP)
- Colour of joints: white
- All O-rings maintenance free
- Integrated valve. When in an open position out of the flow path to maintain the maximum amount of flow
- All threaded stays, springs and thumbscrews made of acid-proof stainless steel (AISI 316L)
- Acid-proof POP® rivets for increased durability in aggressive environments
- All hoods can be provided with a protective netting (accessory) to reduce the risk of extracting foreign objects
- Dismantling of the arm without tools for cleaning



Links: [Pressure drop chart](#), [Mounting without gas spring](#), [Mounting with gas springs](#), [User's manual](#), [Capture efficiency](#)

Working area

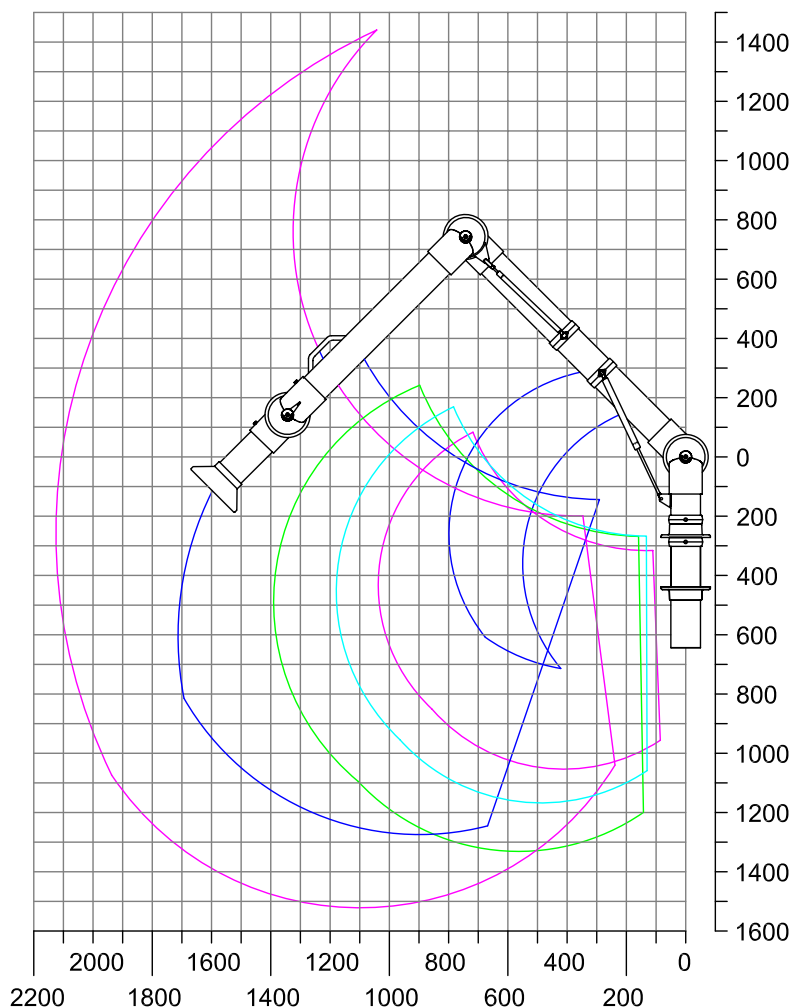
We do not recommend a stationary working position in the upper or lower working area.

All units in mm

* With 1 gas spring

** With 2 gas springs

- A: Model 100-55-1-5
- B: Model 100-4540-1-5
- C: Model 100-5545-1-5
- D: Model 100-6555-1-5
- E: Model 100-9065-1-5*
- F: Model 100-10585-1-5**



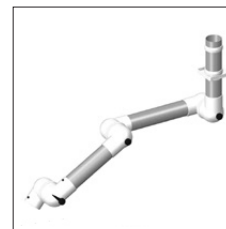


System 100 - Aluminium (AL)

All components RoHS-compatible.

Design:

- Extraction arm for mounting on wall and ceiling
- Working range 795 - 2630 mm
- Recommended airflow 140 to 400 m³/h
- Diameter of tube Ø100 mm
- Tubes made of anodized Aluminium - surface 10 µ
- Joints made of shatterproof, chemical resistant polypropylene (PP)
- Colour of joints: white
- All O-rings maintenance free
- Integrated valve. When in an open position out of the flow path to maintain the maximum amount of flow
- All threaded stays, springs and thumbscrews made of acid-proof stainless steel (AISI 316L)
- Acid-proof POP® rivets for increased durability in aggressive environments
- All hoods can be provided with a protective netting (accessory) to reduce the risk of extracting foreign objects
- Dismantling of the arm without tools for cleaning



Links: [Pressure drop chart](#), [Mounting without gas spring](#), [Mounting with gas springs](#), [User's manual](#), [Capture efficiency](#)

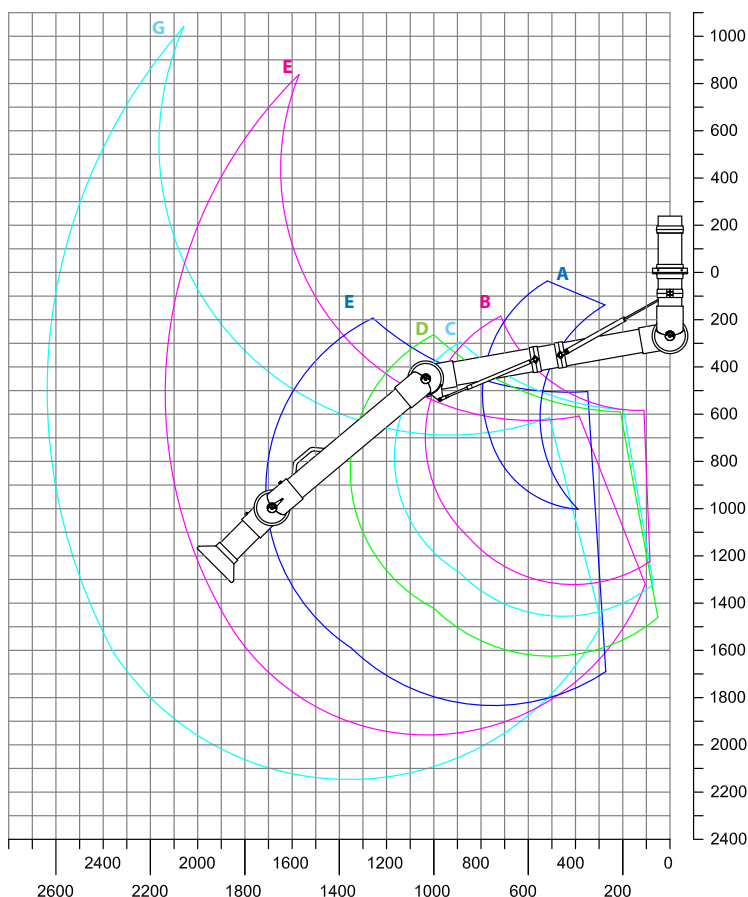
Working area

We do not recommend a stationary working position in the upper or lower working area.

All units in mm

* With 1 gas spring

** With 2 gas springs



- A: Model 100-55-3-5
- B: Model 100-4540-3-5
- C: Model 100-5545-3-5
- D: Model 100-6555-3-5
- E: Model 100-9065-3-5*
- F: Model 100-10585-3-5**
- G: Model 100-135105-3-5**

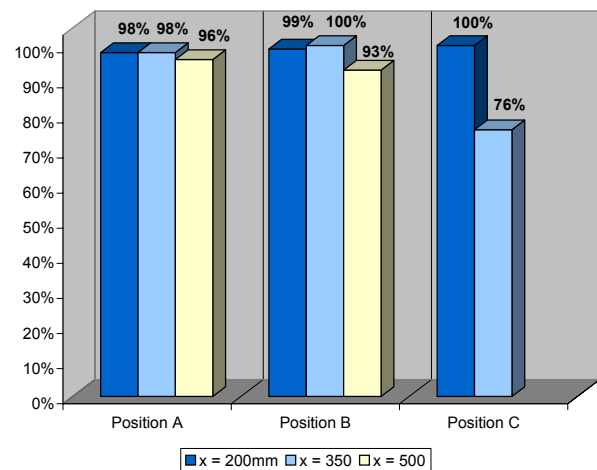
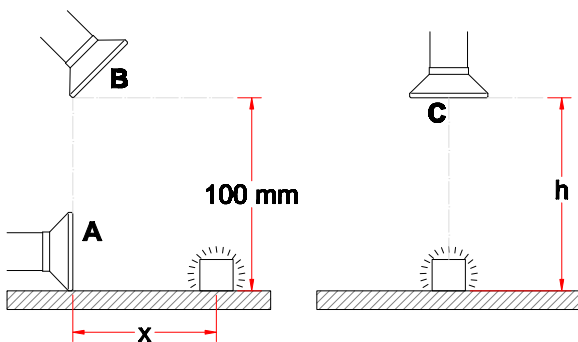


System 100 - Aluminium (AL)

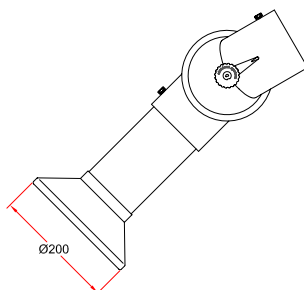
- Metal hood recommended when extracting hot gases, fumes, light dust concentrations etc.
- Suitable for autoclaving
- Diameter of hood: $\varnothing 200$ mm
- Hood, connection tube and flange made of anodized aluminium-surface 10μ



Capture efficiency



Drawing



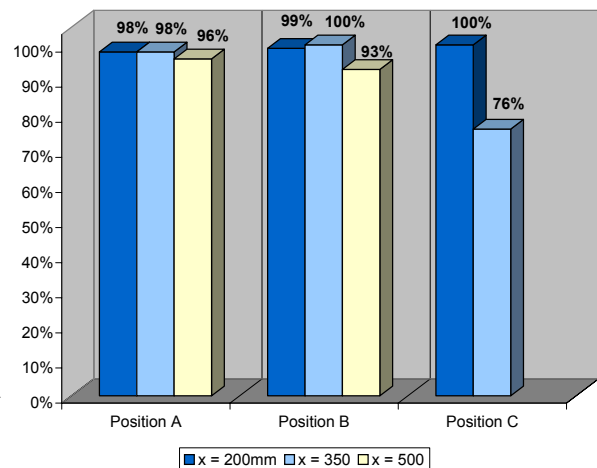
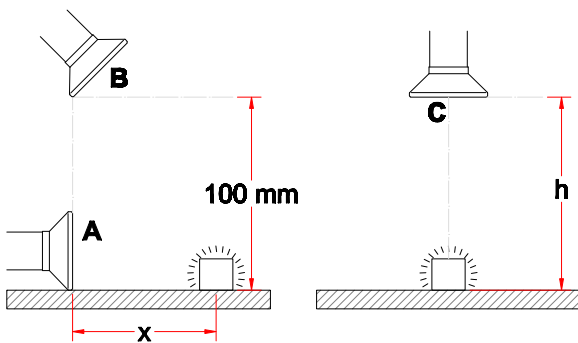


System 100 - Aluminium (AL)

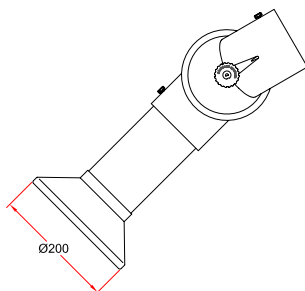
- Metal hood recommended when extracting hot gases, fumes and light dust concentrations
- Diameter of hood: $\varnothing 200$ mm
- Hood made of aluminium with a polyester powder-coating
- Connection tube made of anodized aluminium - surface 10μ



Capture efficiency



Drawing





System 100 - Aluminium (AL)

- Round hood recommended for light fumes, gases and over small open vessels
- Diameter of hood: Ø385 mm
- Increased stability when moving the hood due to reinforced rim of the hood
- Increased efficiency at an angled position
- Hood made of transparent PETG, resistant to solvents
- Connection tube made of anodized aluminium - surface 10 µ
- The transparent hood assists in keeping a good view of the work place

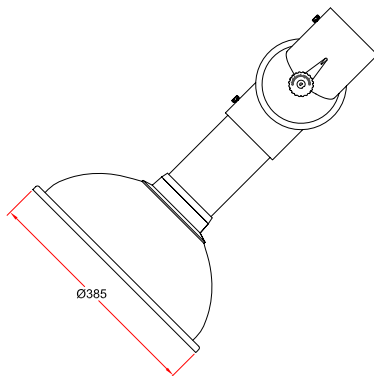


Capture efficiency

For this product there are no measurements.

In order to achieve optimal position, please compare with no. [1-10050](#).

Drawing



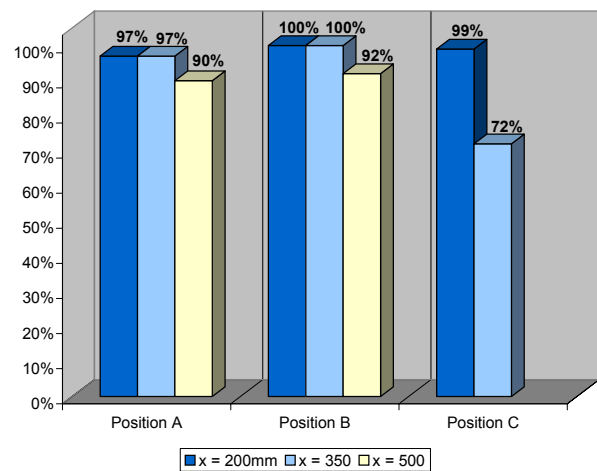
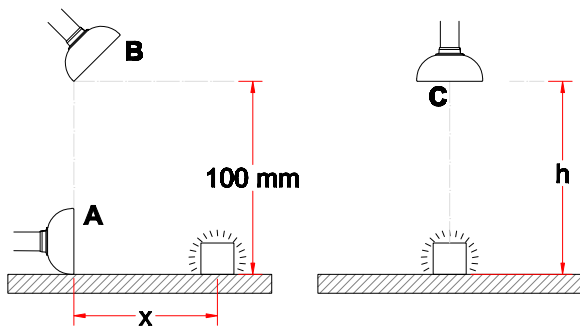


System 100 - Aluminium (AL)

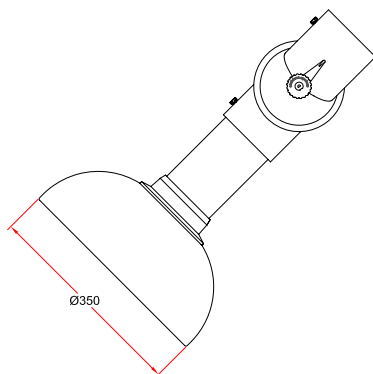
- Round hood recommended when extracting hot gases, fumes and light dust concentrations
- Diameter of hood: Ø350 mm
- Increased efficiency at an angled position
- Hood made of aluminium
- Connection tube made of anodized aluminium - surface 10 µ
- Flange made of polypropylene (PP)



Capture efficiency



Drawing



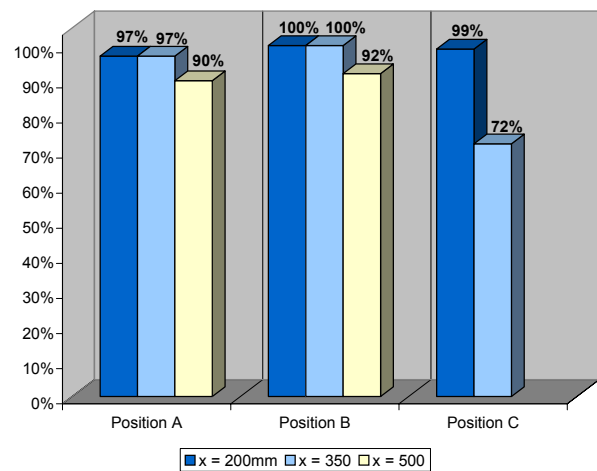
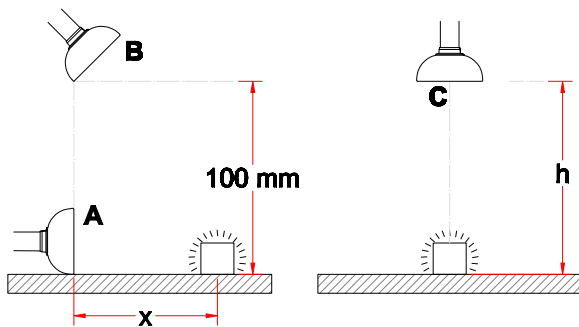


System 100 - Aluminium (AL)

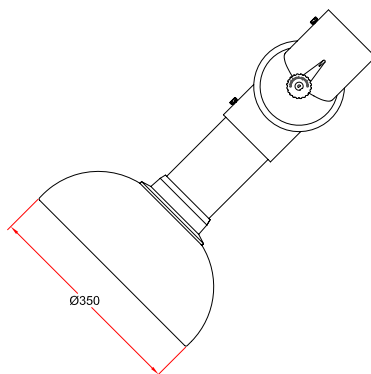
- Round hood recommended when extracting hot gases, fumes and light dust concentrations
- Diameter of hood: Ø350 mm
- Increased efficiency at an angled position
- Hood made of aluminium with a polyester powder coating
- Connection tube made of anodized aluminium - surface 10 µ
- Flange made of polypropylene (PP)



Capture efficiency



Drawing



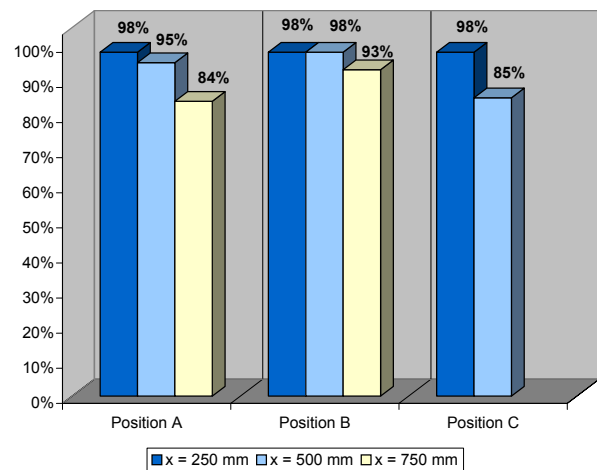
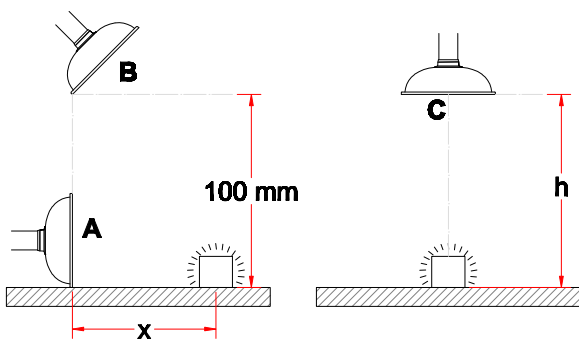


System 100 - Aluminium (AL)

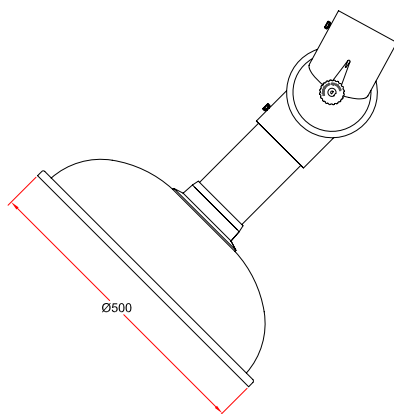
- Round hood recommended for light fumes, gases and over open vessels
- Diameter of hood: $\varnothing 500$ mm
- Increased stability when moving the hood due to reinforced rim of the hood
- Increased efficiency at an angled position
- Hood made of transparent PETG, resistant to solvents
- Connection tube made of anodized aluminium - surface 10μ
- The transparent hood assists in keeping a good view of the work place



Capture efficiency



Drawing



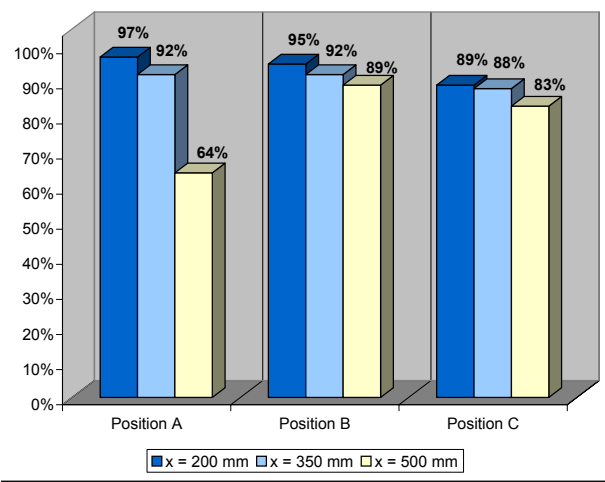
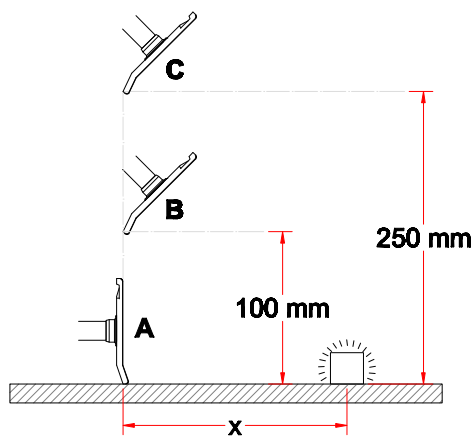


System 100 - Aluminium (AL)

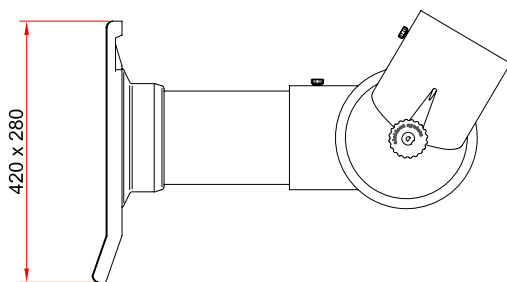
- Flat screen recommended when extracting heavy gases and fumes
- Dimension of the hood: 420x280 mm
- Increased efficiency when placed vertically on a surface
- Hood made of transparent PETG, resistant to solvents
- Connection tube made of anodized aluminium - surface 10 μ
- The transparent hood assists in keeping a good view of the work place



Capture efficiency



Drawing

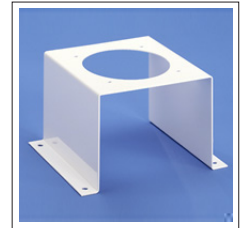


U-profile 30-100-5

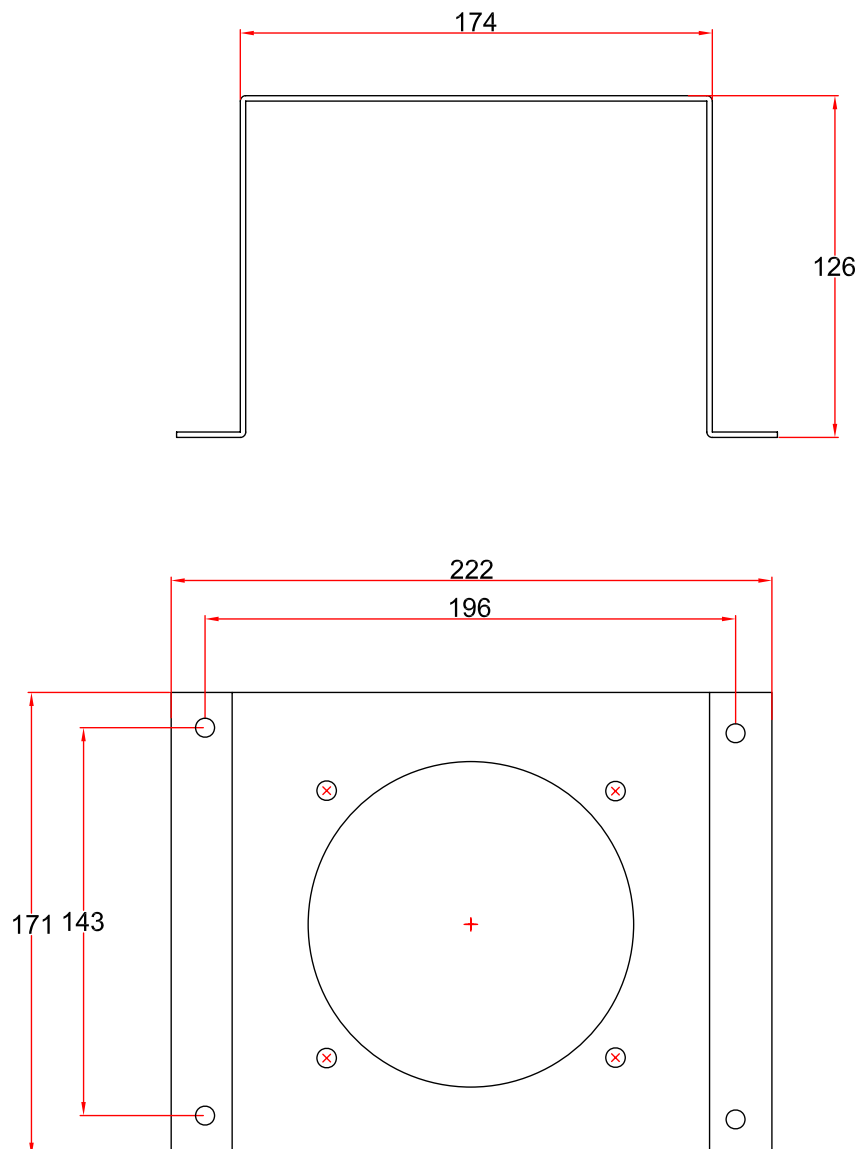


System 100 - Aluminium (AL)

- Bracket/U-profile to support the socket pipe of long extraction arms for table mounting
- Made of steel with a polyester powder-coating on all surfaces
- Colour: white



Drawing



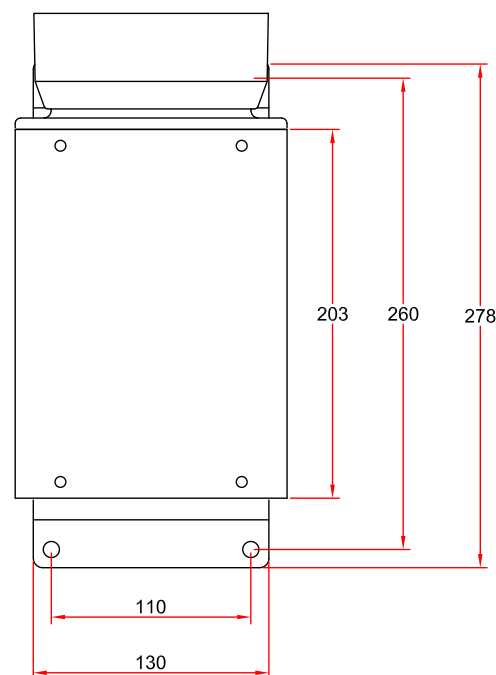
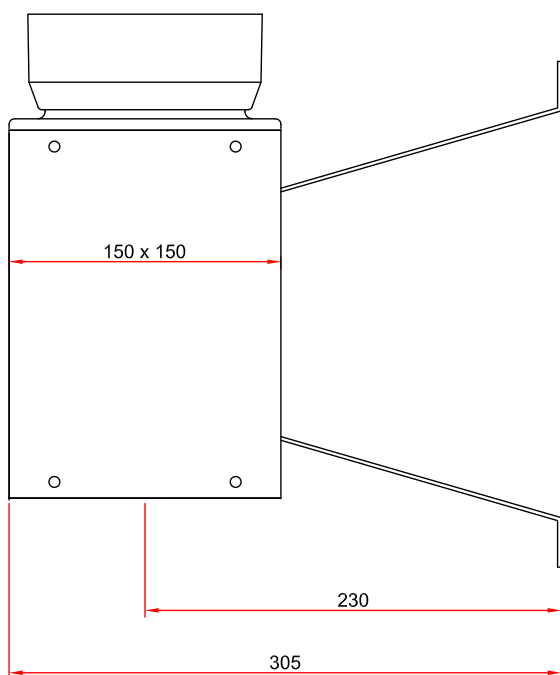


System 100 - Aluminium (AL)

- Wall bracket to mount extraction arms for wall or ceiling mounting to the wall
- Made of steel with a polyester powder-coating on all surfaces or acid proof stainless steel (AISI 316L)
- Colour: white
- Reducer to duct $\varnothing 125\text{mm}$ included



Drawing



Wall bracket 2-100-203-050

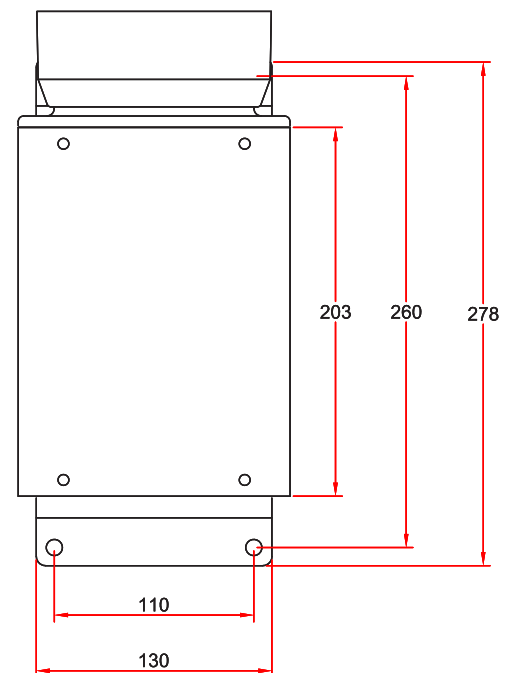
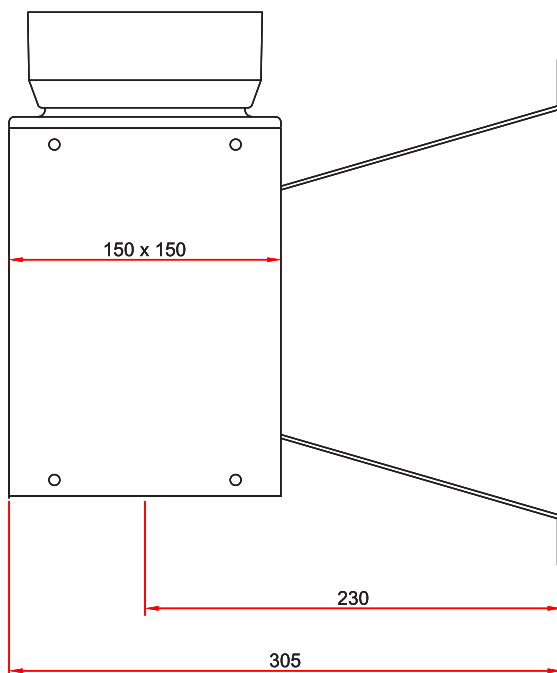


System 100 - Aluminium (AL)

- Wall bracket to mount extraction arms for wall or ceiling mounting to the wall
- Made of steel with a polyester powder-coating on all surfaces or acid proof stainless steel (AISI 316L)
- Colour: black
- Reducer to duct $\varnothing 125\text{mm}$ included



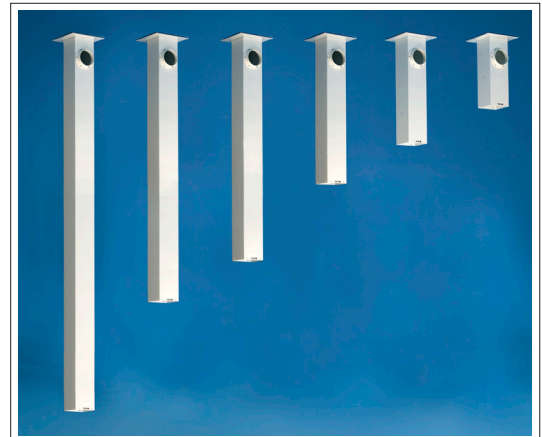
Drawing



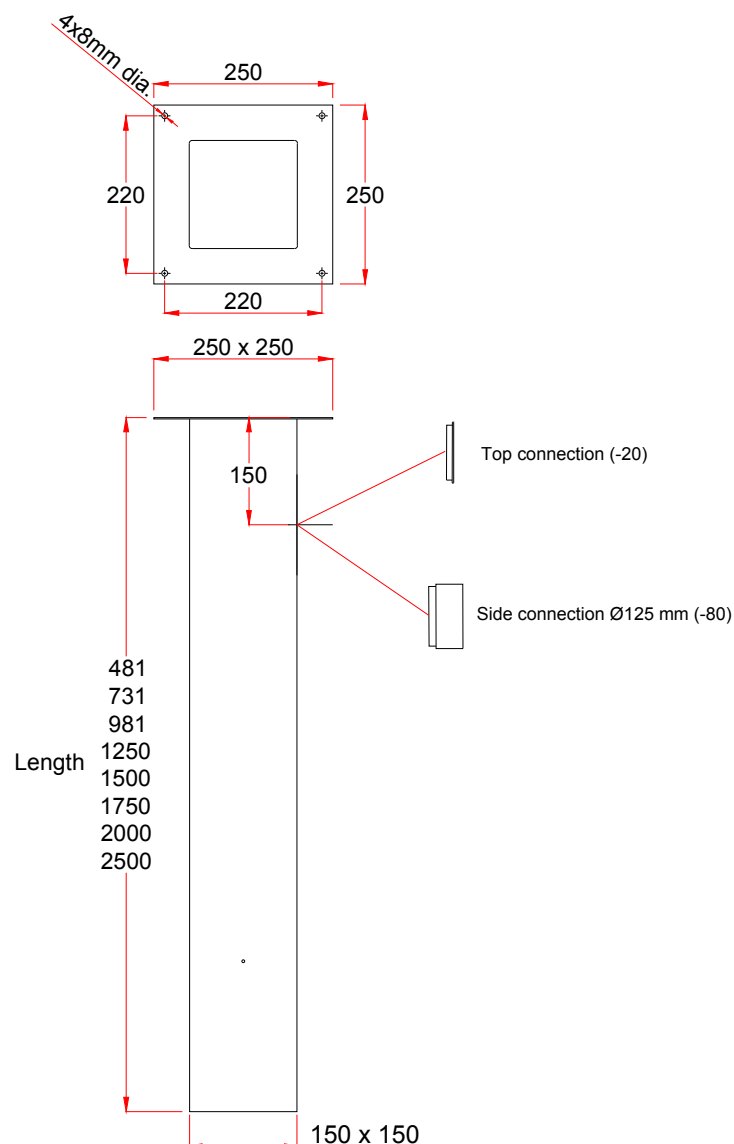


System 100 - Aluminium (AL)

- Ceiling column to mount extraction arms for ceiling mounting to the ceiling
- Strong construction made of steel
- Increased durability due to polyester powder-coating on all surfaces
- Top connection (-20) or side connection Ø125 (-80)
- Colour: white (-) or black (-050)
- Dimension: 150x150 mm
- Length: 500 - 2500 mm



Drawing



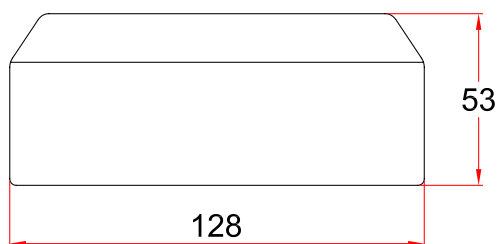


System 100 - Aluminium (AL)

- Reducer to connect extraction arm and ventilating duct
- Reduces from Ø125 - Ø100
- Made of polypropylene (PP)
- Colour: White



Drawing

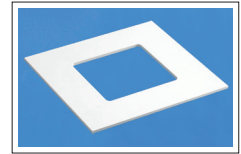


Cover flange 4-250-250



System 100 - Aluminium (AL)

- Cover flange to mount on false ceiling.
Hides the carrying of the ceiling column through the false ceiling
- Dimensions: 250 x 250 mm
- Material: polystyrene
- Fasten with glue or small screws
- Colour: white



Drawing

For this product there is no drawing

Support bracket 2-100-5

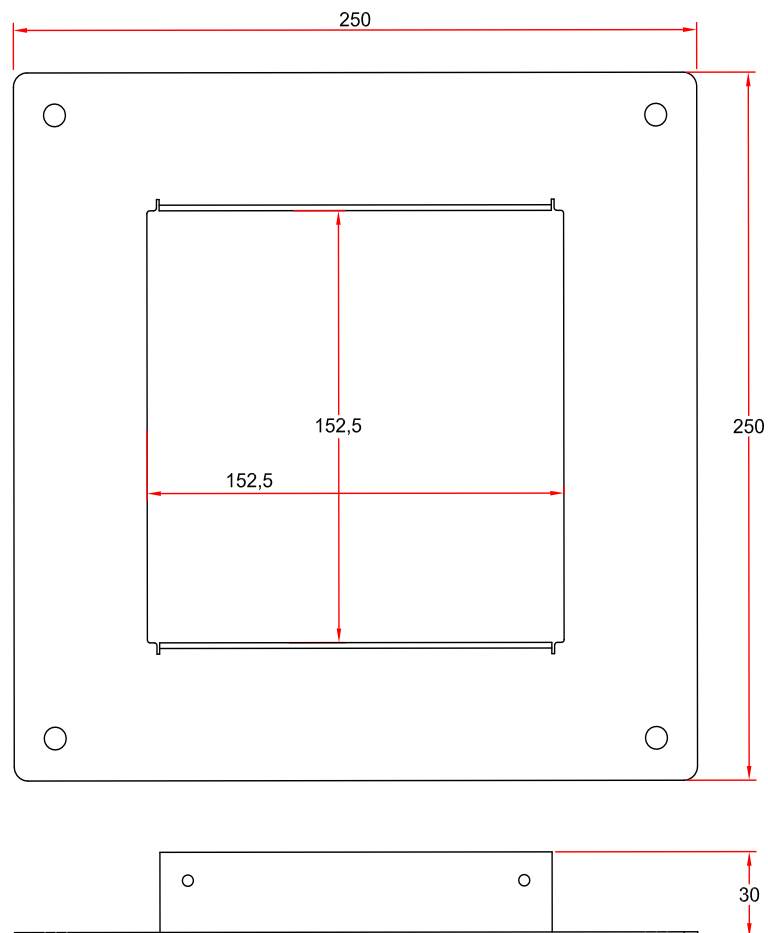


System 100 - Aluminium (AL)

- For extra support of long ceiling columns when mounted to ceiling racks or with wires to the deck
- Made of steel with a polyester powder-coating on all surfaces
- Colour: white
- Dimensions: 250 x 250 mm



Drawing





System 100 - Aluminium (AL)

- Protective netting to be placed in the hood
- Protects against extraction of foreign objects
- Polypropylene (PP)
- Colour: white



Drawing

