

Extension arm

Extension arm, market leading stability and ease of use

Geovents Extension arms can be ordered in several variants from 2 to 5 meters, in a straight (1-link) version or up to 4m in the version with double joints (2-link).

The Extension arm fits all our arms. It will be possible to get a total length of up to 9 meters - an easy way to extend the WING, COMPACT, ASA arms.

When the Wing and Compact arm is mounted in the mounting flange, it is possible to turn the arm 360°.

The arms are supplied as a kit, designed with the focus on easy installation and ease of use.

Supplied complete incl. piping and flexible joints.

If you want shorter or longer versions, this is possible.

Geovent wall mounted extension arm is used to extend the ASA, Wing or Compact arm range.

It is smoothly operated and is easy to position, due to the special design and use of cone bearings, freed flange bearings in joints + the use of friction discs on the surface.

This makes it possible to adjust the friction of the axis's by simply adding or reducing tension.

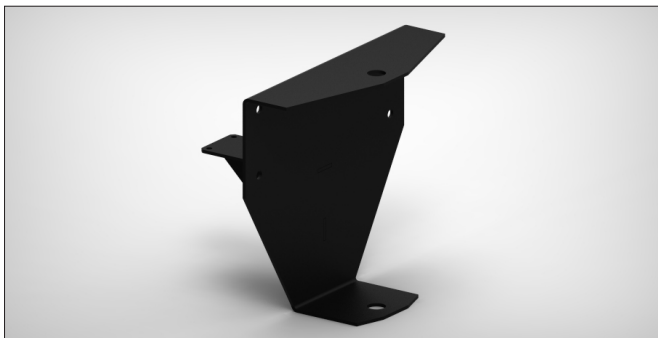


Extension arm with WING adapter.

Ordering table

01-181	Extension arm 2 m, 1-joint for 160 mm, incl. wall consol
01-181A	Extension arm 2 m, 1-joint for 200 mm, incl. wall consol
01-182	Extension arm 3 m, 1-joint for 160 mm, incl. wall consol
01-182A	Extension arm 3 m, 1-joint for 200 mm, incl. wall consol
01-183	Extension arm 4 m, 1-joint for 160 mm, incl. wall consol
01-183A	Extension arm 4 m, 1-joint for 200 mm, incl. wall consol
01-184	Extension arm 5 m, 1-joint for 160 mm, incl. wall consol
01-184A	Extension arm 5 m, 1-joint for 200 mm, incl. wall consol
01-186	Extension arm 4 m, 2-joint for 160 mm, incl. wall consol
01-186A	Extension arm 4 m, 2-joint for 200 mm, incl. wall consol
Smaller Extension arm can be made on request.	
01-195	Adapter for WING / COMPACT ø160 mm
01-196	Adapter for WING / COMPACT ø200 mm
01-197	Adapter til ASA universal

Adapter

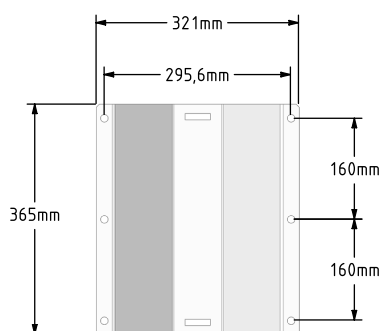
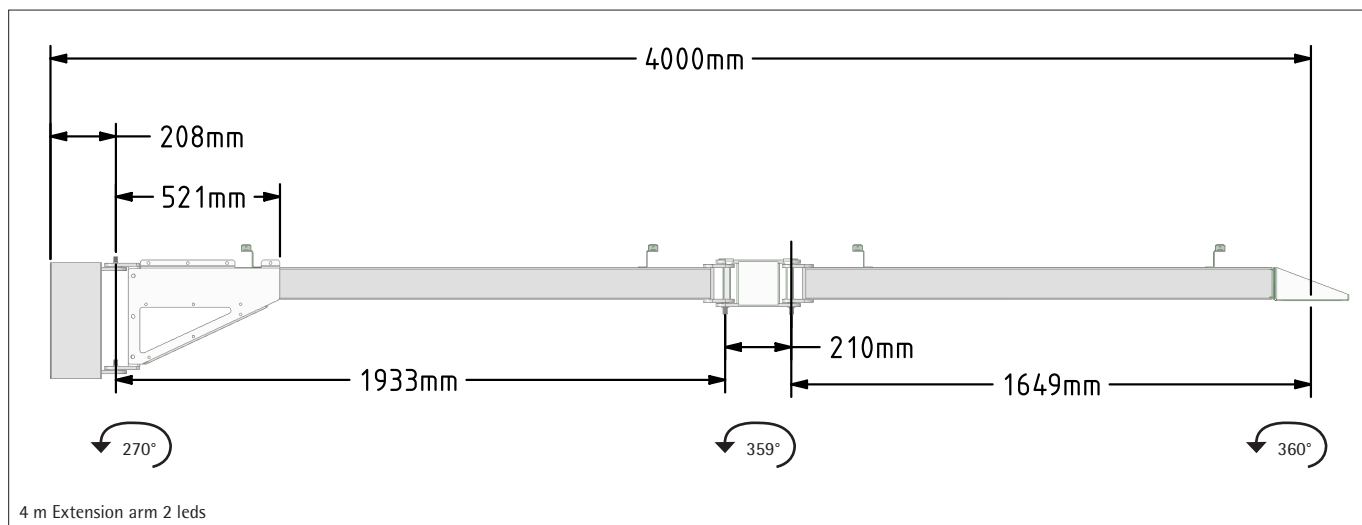


Adapter for ASA ø160 mm and ø200 mm

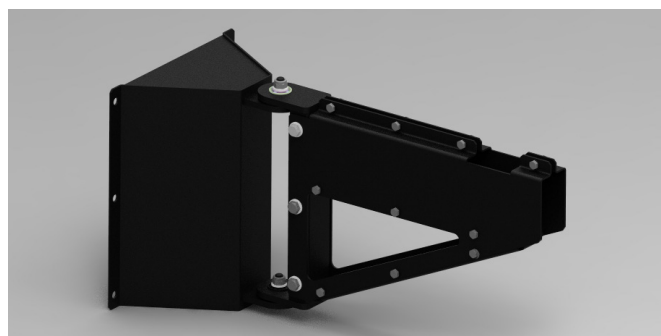


Adapter for WING ø160 mm and ø200 mm

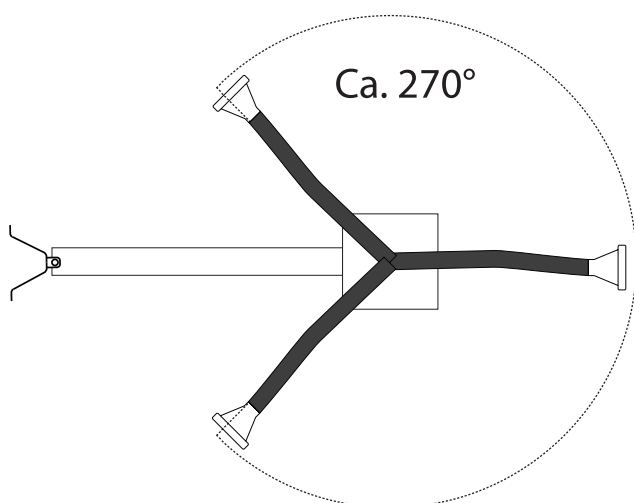
Dimensions



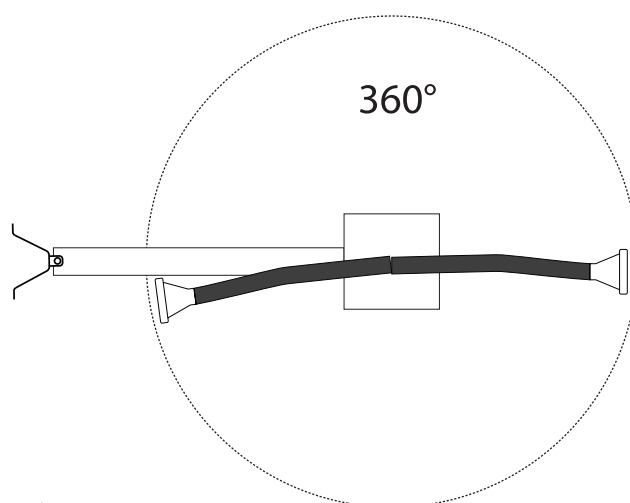
Wall console



Wall console - 01-180



Asa arm



Wing / Compact arm