

## Filter

# GeoFilter Dust

The GeoFilter Dust may be applied as a supplement to existing extraction systems. This preliminary separation is intended for being built into the channel system, where separate filtration is required, for example at grinding machines, belt sanders, etc. for the protection of the extraction fan. The extraction capacity of the preliminary.

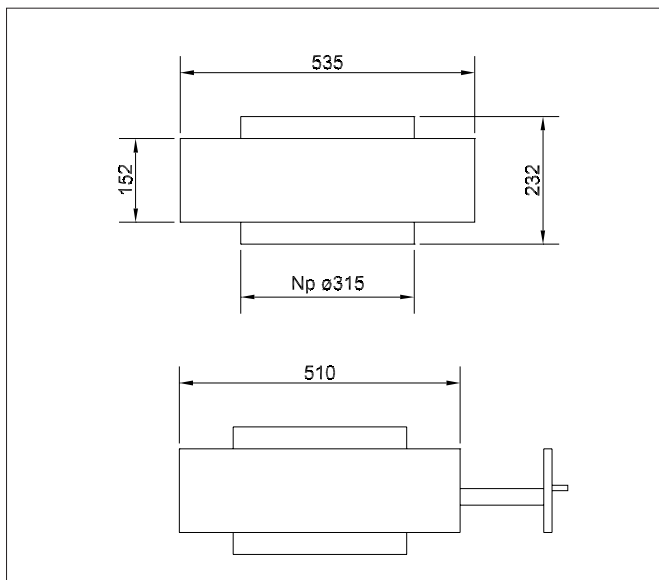
The filter mat is mounted in a retractable cassette. When the cassette is activated, the filter is cleaned by a built-in brush system. Then the dust may be emptied into a dustbin or a bucket via the sliding damper.

The filter box is executed in epoxy enameled and galvanized steel.

**Effective filter area:** 0.22 m<sup>2</sup>  
**Separation efficiency:** 85% v. 0,3µm(Eu3)  
 95% v. 0,3µm(Eu5)

For older grinding machines, which cannot be equipped with suction branch, we recommend the ASA-3 or the MINI-Arm with ø100 mm suction hood, for example.

### Dimensions



### Accessoires

15-035	Replacement filter EU3
15-036	Replacement filter EU5
56-074	Reduction MF315/Np160
56-075	Reduction MF315/Np200
61-086	Slider damper ø160 mm



GeoFilter Dust

