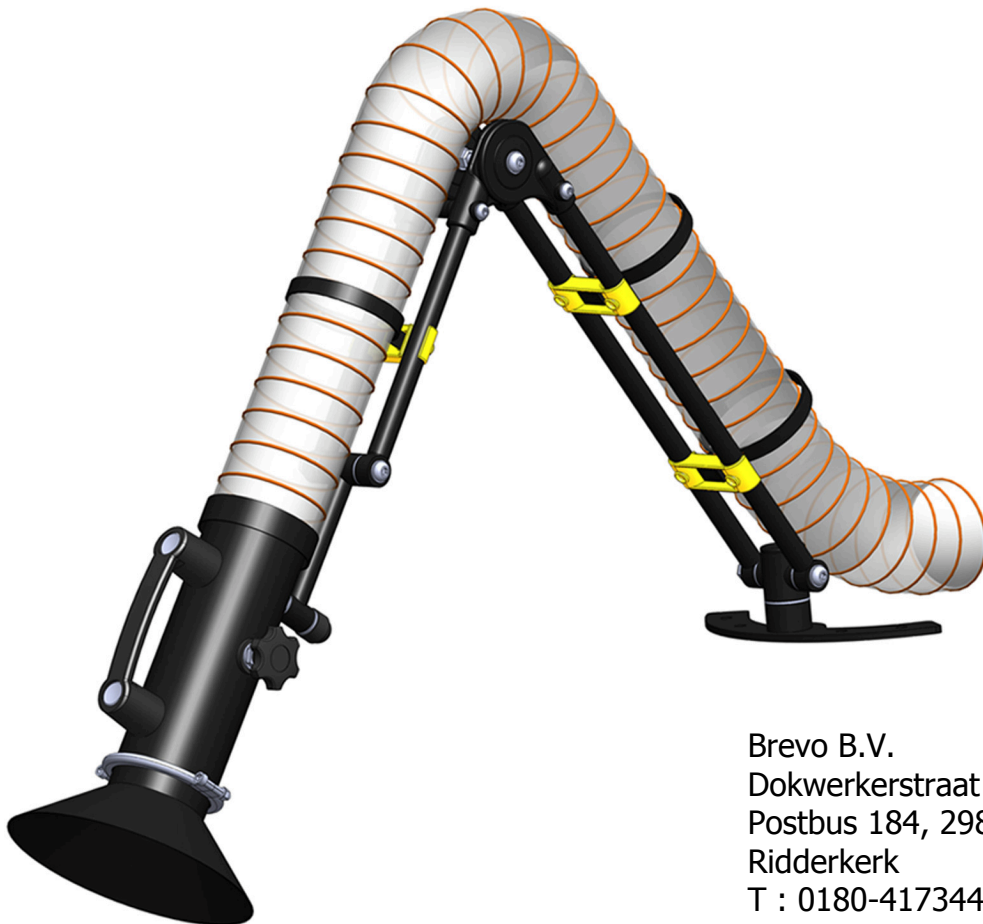




Mini HPD

Hood Positioning Device



Brevo B.V.
Dokwerkerstraat 3, 2984 BJ
Postbus 184, 2980 AD
Ridderkerk
T : 0180-417344
F : 0180-411563
E : info@brevo.nl
W : www.flextraction.nl

Manual

Read this manual carefully before installation and operation

Contents

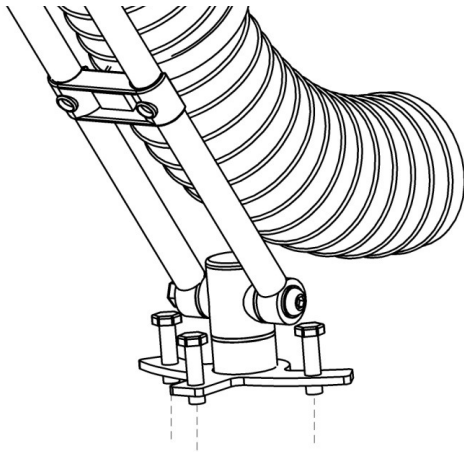
Mini HPD Installation	2
Maintenance	3
Adjustment	5
Spare parts and accessories	6

Mounting Bracket Installation

For ease of installation all flextraction mini Hood Positioning Devices (HPDs) are supplied fully assembled and complete with either a bench or wall mounting bracket. To mount the bracket first ensure that the HPD is in the correct orientation and is the correct distance from the duct outlet.

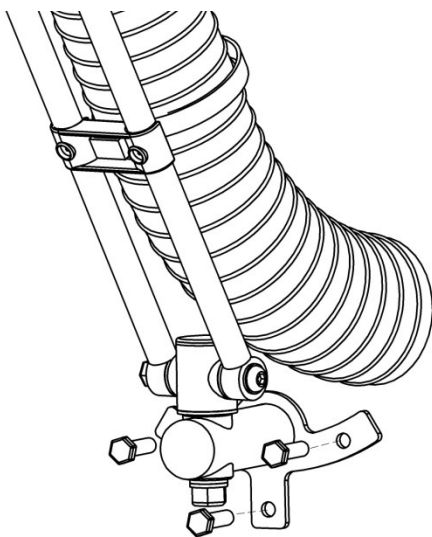
Installation of the mini HPD

1a) *Installation of the bench mounting bracket;*



Install the bracket using 3 x M8 bolts, It is recommended that the mini arm is installed within 0.4m of the duct connection.

1b) *Installation of the wall mounting bracket;*



Install the bracket using 3 x M8 bolts, It is recommended that the mini arm is installed within 0.4m of the duct connection.

2) Installation check

- Ensure that all bolts have been securely fastened.
- Check that the flexible hose is securely connected to the duct outlet.
- Check that the HPD holds a fixed position, if adjustment is required please refer to page 5 of this manual.

Maintenance

Ensure that any persons cleaning the equipment are wearing adequate (PPE) personal protection equipment.

Periodic cleaning of the HPD is recommended using warm water and a mild detergent to remove any excess dust or dirt build up.

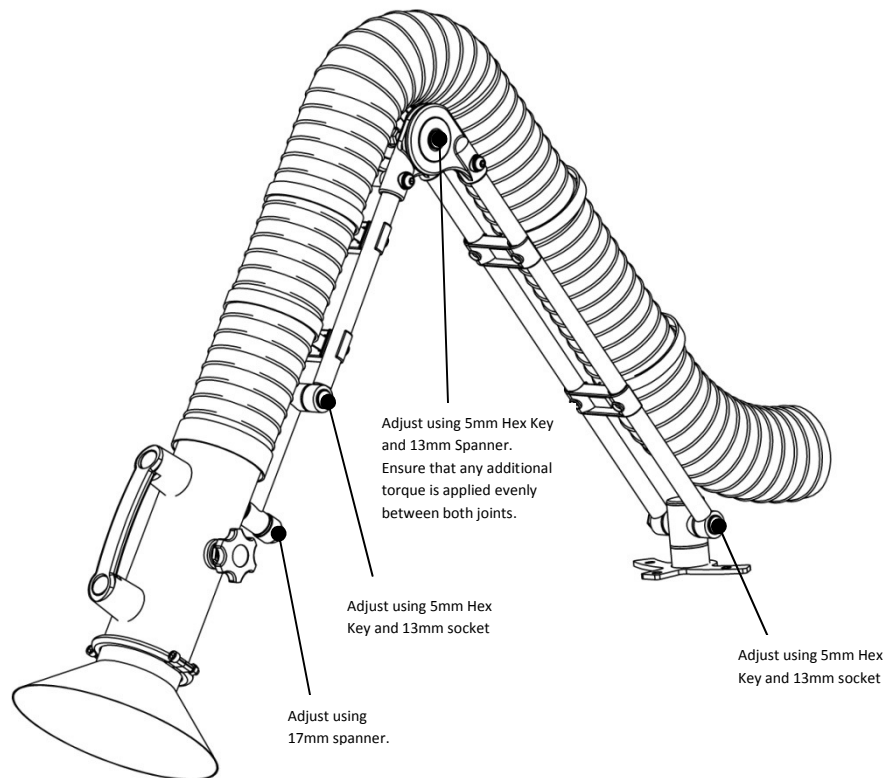
DO NOT USE AGGRESSIVE CLEANING AGENTS ON THE EQUIPMENT AS THIS MAY LEAD TO DAMAGE TO THE HPD AND HOSE.

Adjustment

The equipment is fitted with easily accessible externally mounted fixings to simplify the adjustment of any joint. It is normal practice for friction joints to become slack under use and periodic adjustment maybe necessary for the equipment to maintain a self supporting position.

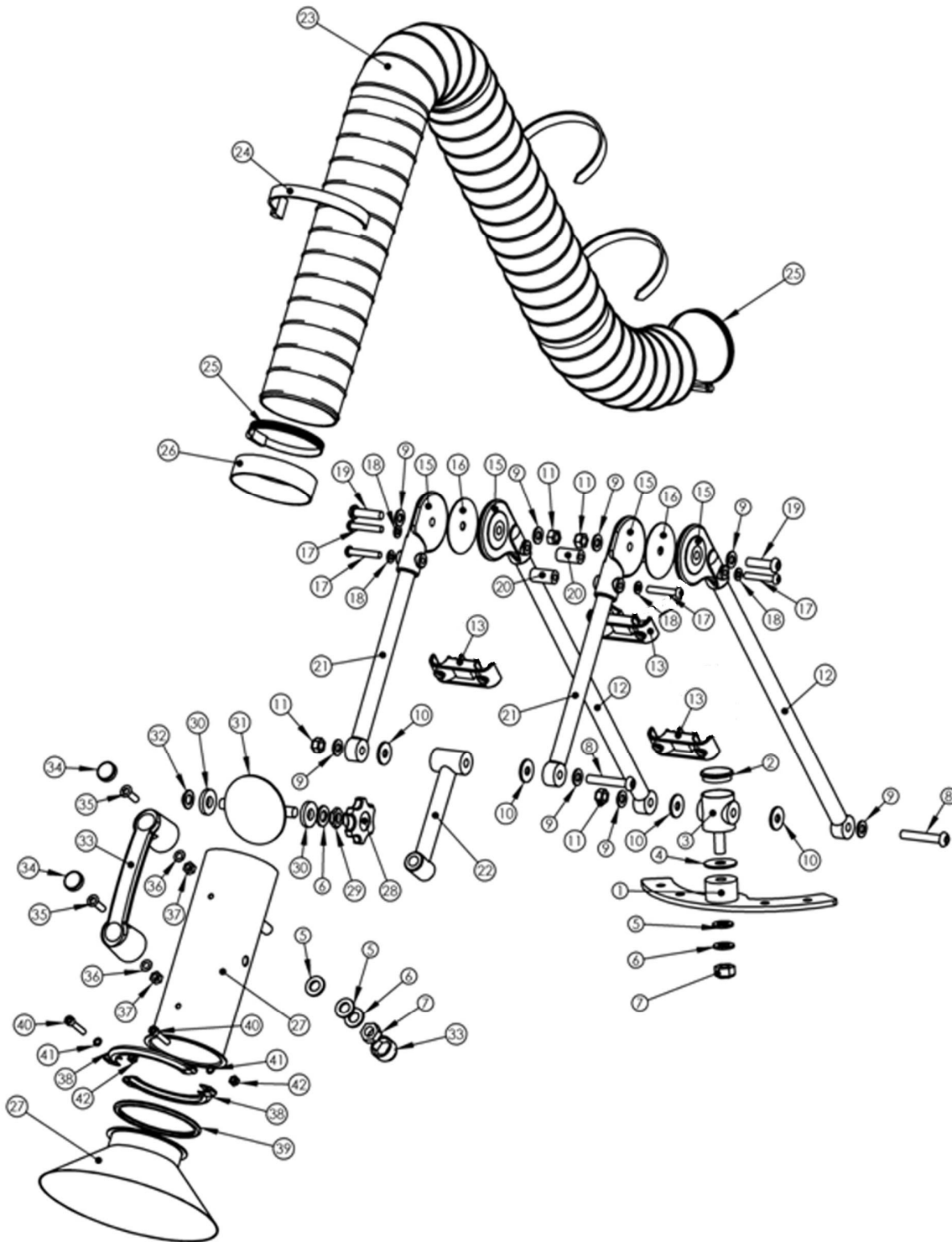
To adjust the mini HPD the following tools will be required;

- 5mm Hex key
- 13mm Spanner
- 17mm Spanner



Spare parts and accessories

Spares parts and accessories can be ordered directly from flextraction Ltd. When ordering spare parts quote the HPD model, serial number, part name, part number and quantity. The serial numbers can be located on the rear arm of the mini HPD.



Mini HPD

No.	Part		
1	Mounting plate	32	Star cap
2	End cap	33	Handle
3	Swivel mounting	34	Handle cap
4	Washer	35	Bolt
5	Nylon washer	36	Washer
6	Washer	37	Nut
7	Nut	38	Split ring
8	Bolt	39	Split ring rubber
9	Washer	40	Bolt
10	Washer	41	Washer
11	Nut	42	Nut
12	Rear tube	43	Hood flare
13	Centre Clip		
14	Screw		
15	Centre joint		
16	Friction pad		
17	Bolt		
18	Washer		
19	Bolt		
20	Centre bush		
21	Font tube		
22	Hood support		
23	Hose		
24	Hose strap		
25	Hose clamp		
26	Hose clamp band		
27	Nozzle body		
28	Hand wheel		
29	Nut		
30	Washer		
31	Damper		



Brevo B.V.
Dokwerkerstraat 3, 2984 BJ
Postbus 184, 2980 AD
Ridderkerk
T : 0180-417344
F : 0180-411563
E : info@brevo.nl
W : www.flextraction.nl